

UNION OF MYANMAR

Ministry of Labour

Department of Labour / UNFPA

HANDBOOK ON

HUMAN RESOURCES DEVELOPMENT

INDICATORS, 2003



Department of Labour



United Nations
Population Fund

February 2004, Yangon

*UNFPA supported the User Workshop on
Human Resources Development Indicators and
printing of the report.*

UNION OF MYANMAR
Ministry of Labour
Department of Labour / UNFPA

HANDBOOK ON
HUMAN RESOURCES DEVELOPMENT
INDICATORS, 2003

*UNFPA supported the User Workshop on
Human Resources Development Indicators and
printing of the report.*

FOREWORD

This "Users' Handbook on Human Resources Development Indicators, 2003" is the seventh Handbook among the series of its kind since 1997. As we have pointed out before, this is just a handbook, not a year book and we take care that the indicators here are the choicest from many of the indicators. At the same time, the Department of Labour takes great care to improve not only the quantity of this Handbook but also the quality as well. This year, we not only increase the number of indicators and also to increase the number of prints but also review the definition, taking into consideration the aspect and objective of the indicator itself as well as the concept of the Departments and Organizations concerned.

The Department of Labour, working in close co-operation with UNFPA and other Departments and Organizations present the users the most distinct and decisive indicators that will reflect the image of the country. The Department of Labour will always continuously strive to be able to hand the Users this Handbook containing the most useful human resources development indicators for their use. From here I would like to offer my thanks to all who are concerned in making this handbook to come out in time.

U Soe Nyunt
Director-General
Department of Labour

HUMAN RESOURCES DEVELOPMENT INDICATORS, 2003

CONTENTS

TABLE NO.		PAGE
I. POPULATION		
1.	Population and Growth Rate (As of 1 st October).....	1
2.	Population, Area and Density by State and Division, 2002.....	1
3.	Population Distribution by Age and by Sex, 2002	2
II. VITAL RATES		
4.	Selected Vital Statistics	3
III. HEALTH AND NUTRITION		
5.	Health and Nutrition Indicators	4
6.	Availability of Health Personnel and Facility	4
7.	Traditional Health Facilities	5
IV. EDUCATION AND TRAINING		
8.	Indicators on Basic Education.....	5
9.	Number of Graduates by Specialization.....	6
10.	Skills Training in TAV Institutions by Skill Level	8
11.	Percentage of Female Students by Education level.....	8
V. LABOUR FORCE		
12.	Labour Force, LFPR and Unemployment Rate	9
13.	Employed Population by Occupation Group.....	10
14.	Employed Population by Industry Group	10
VI. ECONOMIC INDICATORS		
15.	Indicators on Economic Performance.....	11
16.	Public Expenditure by Sector.....	12
VII. FOOD AVAILABILITY AND LAND USE		
17.	Food Production and Land Use.....	12

CONTENTS

TABLE NO.		PAGE
VIII. OTHER INDICATORS		
18.	Transportation, Communication and Information Indicators.....	13
19.	Mass Media	14
20.	Social Welfare Establishments	14
21.	Establishments under Myanmar Maternal and Child Welfare Association.....	14
22.	Total Number of Villages	15
23.	Crime Rate	15

IX. LIST OF CHARTS

CHART NO.		PAGE
I.	Estimated Total Population of Myanmar	2
II.	Crude Birth and Crude Death Rates	3
III.	Labour Force by Sex.....	9
IV.	GDP Growth Rate.....	11
V.	Transportation and Communication Indicators.....	13

X. LIST OF INDICATORS

16-25

XI DEFINITIONS

Definitions of Human Resources Development Indicators

30-44

I. Population

Population information is usually collected and published by the Department of Population (DOP). The projected total population figures by sex and by growth rate during the last eight years are presented in Table 1.

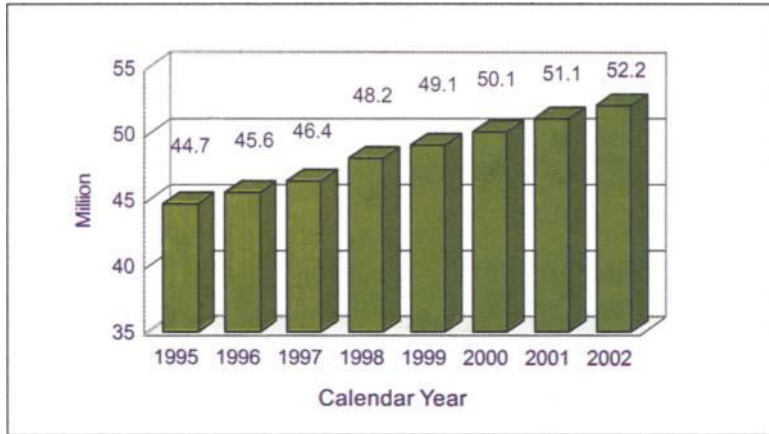
Table 1. Population and Growth Rate (As of 1st October)

Year	(Indicator No.1)			(in million)
	Male	Female	Total	Growth Rate(%)
1995	22.23	22.51	44.74	1.84
1996	22.63	22.94	45.57	1.84
1997	23.04	23.36	46.40	1.84
1998	23.91	24.25	48.16	2.02
1999	24.40	24.73	49.13	2.02
2000	24.91	25.22	50.13	2.02
2001	25.42	25.72	51.14	2.02
2002	25.94	26.23	52.17	2.02

Geographically, Myanmar is divided into 7 states and 7 divisions. Estimated population by sex and population density by state and division are presented in Table 2.

Table 2. Population, Area and Density by State and Division, 2002

State/Division	Male	Female	Total	Area (sq. km.)	Density (per sq. km.)
Kachin	675323	689053	1364376	89042	15
Kayah	148580	144212	292792	11732	25
Kayin	780136	794854	1574990	30383	52
Chin	241256	253620	494876	36019	14
Sagaing	2777155	2877400	5654555	93713	60
Tanintharyi	727018	728080	1455098	43345	34
Bago	2675996	2651039	5327035	39404	135
Magway	2397177	2476117	4873294	44821	109
Mandalay	3580677	3665621	7246298	37935	191
Mon	1341447	1329949	2671396	12297	217
Rakhine	1453089	1462058	2915147	36778	79
Yangon	3010634	3045332	6055966	10171	595
Shan	2536410	2524743	5061153	155801	32
Ayeyarwady	3596281	3587260	7183541	35137	204
Total	25941179	26229338	52170517	676578	77

Chart I. Estimated Total Population of Myanmar, 1995-2002

Population distribution by age and sex together with sex ratios, and dependency ratios, as of 1st October 2002, are given in Table 3.

Table 3. Population Distribution by Age and by Sex, 2002

Age Group	Population (number)			Distribution (%)			Sex Ratio
	Male	Female	Total	Male	Female	Total	
0-4	3148136	3069830	6217966	6.0	5.9	11.9	102.55
5-9	2872550	2881668	5754218	5.5	5.5	11.0	99.68
10-14	2610536	2473131	5083667	5.0	4.7	9.7	105.56
15-19	2483550	2310638	4794188	4.8	4.4	9.2	107.48
20-24	2375898	2290669	4666567	4.6	4.4	9.0	103.72
25-29	2189489	2168285	4357774	4.2	4.2	8.4	100.98
30-34	1981001	2021460	4002461	3.8	3.9	7.7	98.00
35-39	1760691	1833917	3594608	3.4	3.5	6.9	96.01
40-44	1503518	1579417	3082935	2.9	3.0	5.9	95.19
45-49	1260510	1336724	2597234	2.4	2.6	5.0	94.30
50-54	1021274	1093162	2114436	2.0	2.1	4.1	93.42
55-59	817340	890072	1707412	1.6	1.7	3.3	91.83
60-64	656893	741417	1398310	1.2	1.4	2.6	88.60
65-69	507393	594904	1102297	1.0	1.1	2.1	85.29
70-74	368322	444018	812340	0.7	0.9	1.6	82.95
75+	384078	500026	884104	0.7	0.9	1.6	76.81
Total	25941179	26229338	52170517	49.8	50.2	100	98.90
Dependency Ratio Total = 61.4%; Old-age DR (65+) = 8.6%; Young DR (0-14) = 52.8%							
Dependency Ratio Total = 68.7%; Old-age DR (60+) = 13.5%; Young DR (0-14) = 55.2%							

II. Vital Rates

In Myanmar, vital statistics such as Crude Birth Rate (CBR), Crude Death Rate (CDR), Maternal Mortality Ratio (MMR) and Late Foetal Death Ratio are collected and disseminated by Central Statistical Organization (CSO) in collaboration with the Department of Health Planning (DHP). The vital rates for the union are interpolated from the urban and rural rates using appropriate weights. Crude Birth and Crude Death Rates are also presented in Chart II. Caution must be taken when comparing figures with other countries or even within the country from one year to the other, since coverage and completeness of the vital registration system vary.

Table 4. Selected Vital Statistics (Indicator No. 2,3 & 6)

Indicator		1996	1997	1998	1999	2000	2001
Crude Birth Rate** (CBR)	Union	29.5	28.9	28.7	26.5	25.9	25.7(p)
	Rural	30.0	29.2	29.1	27.1	26.4	26.3(p)
	Urban	28.1	27.8	27.5	24.5	24.2	23.9(p)
Crude Death Rate** (CDR)	Union	9.6	8.8	8.6	5.4*	7.1	6.9(p)
	Rural	9.9	8.9	8.7	5.7*	7.3	7.1(p)
	Urban	8.8	8.5	8.2	5.1*	6.3	6.2(p)
Maternal Mortality Ratio** (MMR)	Union	1.7	1.5	1.6	2.55*	1.7	1.6(p)
	Rural	1.9	1.7	1.8	2.81*	1.9	1.8(p)
	Urban	1.0	1.0	1.0	1.78*	1.1	1.0(p)

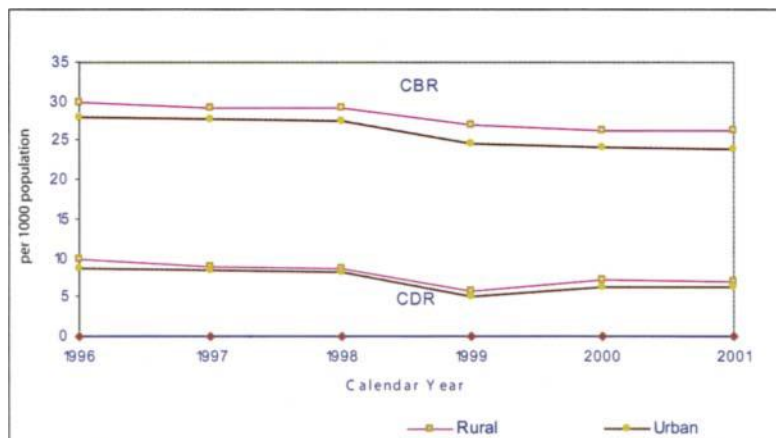
Note: In previous publications, these figures are shown in fiscal year. Starting from this publication these figures will be presented in calendar year.

* National Mortality Survey, 1999, CSO.

** These figures are obtained from the regular reporting system of vital registration and they may differ if surveys are conducted.

(p) Provisional

Chart II. Crude Birth & Crude Death Rates



III. Health and Nutrition

There are several indicators concerning health and nutrition. The indicators are usually obtained from the Department of Health Planning (DHP) and the Department of Health (DOH). Most indicators are obtained from regular administrative statistics, however, few from adhoc surveys. Values of some indicators are not available for a few years. Table 5 shows selected indicators with reference year.

Table 5. Health and Nutrition Indicators

(Indicator No. 8, 9, 10, 11, 15, 18 & 19)

Indicator		96/97	97/98	98/99	99/00	00/01	01/02
Percentage of Severely Malnourished Children under 5	Union	-	12.6	-	7.9 ^x	-	-
Contraceptive Prevalence Rate	Union	32.7*	43.7 ⁺	-	49.9 ⁺	52.7	55.1
Percentage of Low Birth Weight Babies	Union	n.a	n.a	n.a	10	n.a	n.a
Percentage Coverage of Universal Child Immunization	Union	86.0	89.0	-	79.9 ^x	-	-
Number of Villages per Rural Health Care Centre**	Union	47.1	45.3	46.9	43.8	46.4	46.1
Percentage of Population Accessible to Safe and Convenient Drinking Water ^x	Union	57.0	66.0	-	71.5 ^x	-	-
	Rural	50.0	59.9	-	65.8 ^x	-	-
	Urban	78.0	87.9	-	89.2 ^x	-	-
Percentage of Population Accessible to Proper Sanitation ^x	Union	45.7	45.2	-	63.1 ^x	-	-
	Rural	39.2	39.0	-	56.5 ^x	-	-
	Urban	65.1	64.5	-	83.6 ^x	-	-

Note: * "Fertility and Reproductive Health Survey, 1997". DOP.

** Basic Health Division, DOH

x Multiple Indicator Cluster Survey (2000)

+ (72) Reproductive Health Services Project Townships

A composite indicator for measuring the quality of health care services in the rural areas, namely, "percentage of rural health care centres which are adequately equipped with staff, equipment and essential drugs" is available only for the current year. Three indices on the availability of health personnel and hospital facility for the whole country are given in Table 6.

Table 6. Availability of Health Personnel and Facility

(Indicator No. 12, 13 & 14)

Indicator	96/97	97/98	98/99	99/00	00/01	01/02
Population per Physician*	3451	3311	3352	3290	3432	3148
Population per Nurse*	4614	3921	3775	3723	3646	3370
Population per Hospital Bed*	1588	1602	1591	1558	1602	1547

* Health Management Information System, DHP

Table - 7. Traditional Health Facilities (Indicators No. 16)

Indicator	96/97	97/98	98/99	99/00	00/01	01/02
Traditional Medicine Hospitals						
50 bedded hospitals (Public Sector)	-	-	1	2	2	2
16 bedded hospitals (Public Sector)	1	2	4	5	8	9
Dispensaries (Public Sector)	168	179	183	194	204	214
Private Traditional Clinic (Estimated)	-	-	-	-	830	884
Registered Traditional Medical Practitioners	-	-	-	-	8001	8516
Non-registered Traditional Medical Practitioners (Estimated)	-	-	-	-	8723	8774

IV. Education and Training

The Ministry of Education is functionally the main sponsor of education and training, especially in the areas of basic education, teacher education and higher education. Education, especially the higher education sub-sector, is shared among 12 different ministries.

The indicators of basic education and teacher education are usually obtained from the Department of Educational Planning and Training and Myanmar Education Research Bureau. The higher education indicators are obtained from the Departments of Higher Education and different concerned ministries. Although various types of short term vocational training are conducted by government departments and private institutions, it is difficult to get reliable statistics on such training courses or programmes.

Indicator No. 30 "mean years of schooling" is available only from the nation-wide surveys conducted by ENVIPRO (Myanmar) Co., Ltd., a national research firm.

Table 8. Indicators on Basic Education (Indicator No. 20, 21, 22 , 23 & 24)

Indicator		97/98	98/99	99/00	00/01	01/02
Gross Enrollment Ratios by Level	P	97.6	95.2	90.5	89.6	90.7
	M	43.5	40.7	40.4	40.7	42.5
	H	22.7	30.0	32.0	30.9	31.2
Net Enrollment Ratios by Level	P	75.2	77.0	77.0	77.5	78.0
	M	37.0	37.8	37.8	38.2	39.5
	H	19.3	25.5	25.5	27.2	27.6
Transition Rates Between Levels	P to M	66.3	68.9	68.9	68.2	67.9
	M to H	89.1	91.2	91.2	94.4	93.1
Retention Rates by Level	P	47.5	48.5	48.5	53.7	56.9
	M	62.4	64.3	64.3	69.2	75.0
	H	88.0	99.1	99.3	99.1	99.0
Internal Efficiency of Primary Education	^(a) Efficiency %	75.9	73.1	72.0	73.5	78.4
	^(b) Graduates %	56.8	54.3	55.6	56.7	62.1

Note: P = Primary M = Middle H = High School level

(a) Internal Efficiency Coefficient for Primary Education (per cent).

(b) Number of primary level graduates from the cohort of 100 new KG intakes under prevailing student flow rates.

Table 9. Number of Graduates by Field of Study Specialization (Indicator No.26)

Sr.	Specialization	97/98	98/99	99/00	00/01	01/02
1.	Buddhism					
	Buddha Desana (Diploma)	16	-	9	-	-
	Buddha Dhamma (Diploma)	87	-	46	59	68
	Buddhism (M.A.)	11	5	11	20	14
	Buddhism (B.A.)	105	85	63	81	82
	Buddha Dhamma (B.A.)	-	-	-	43	30
2.	Engineering and Architecture	1199	1028	1097	1163	1376
	Engineering and Architect (B.E.)	-	-	-	1031	1227
	Engineering and Architect (M.E.)	-	-	-	75	91
	Number of Ph.D.	-	-	-	57	58
3.	Computer Science and Technology	256	242	191	405	1888
	Computer Science (B.C.Sc.)	-	-	-	100	850
	Computer Technology (B.C. Tech.)	-	-	-	30	331
	Computer Science (B.C.Sc.,Hons.)	-	-	-	111	291
	Computer Technology (B.C.Tech.,Hons.)	-	-	-	15	64
	Computer Science (M.C.Sc.)	-	-	-	10	117
	Computer Technology (M.C.Tech.)	-	-	-	7	42
	Computer Information (M.I.Sc.)	-	-	-	115	193
	Computer Applied Science (M.A. Sc.)	-	-	-	17	-
4.	Economics	126*	91*	897	2218	2221
	B.A.(Eco.)					1100
	B.Econ.(Eco.)					286
	B.Econ.(Hons.)					1
	B.Econ.(Stat.)					119
	B.Econ.(Stat.) (Hons.)					5
	B. Com.					613
	B. Com. (Hons.)					6
	D.E.S.					17
	D.S.					13
	D.M.A.					46
	M.Econ.(Eco.)					6
	M.Econ.(Stat.)					4
	M. Com .					5
5.	Education					
	B.Ed.	1196	1114	1146	1157	1552
	Diplomas					1460
	M.Ed.					31
						61

* = Postgraduate only

Sr.	Specialization	97/98	98/99	99/00	00/01	01/02
6.	Forestry	53	46	40	49	55
7.	Veterinary	121	113	104	133	95
	B.V.Sc.	116	111	101	116	90
	M.Phil.	5	1	2	1	-
	M.V.Sc.	0	1	1	16	5
8.	Arts & Science	1735	6962	47209	79763	79303
	Arts					42296
	B. A.					41282
	Diplomas					179
	M.A.					773
	M.R.S.					62
	Science					37007
	B.Sc.					35372
	Diplomas					15
	M.Sc.					1455
	M.R.S.					165
9.	Foreign Languages	241	481	198	191	190
	Diplomas					187
	M.A.					3
10.	Agriculture	7	6	251	244	229
	Master of Agriculture(M.Agri.Sc.)	7	6	16	9	15
	Agriculture(B.Agri.Sc.)	-	-	235	235	214
11.	Health	1957	1868	2066	1709	2038
	Medical Science (M.B.,B.S.)	448	404	912	503	1035
	Dental Science (B.D.S)	48	40	52	52	45
	Paramedical Science (B.P.Sc.)	-	**18	***64	64	77
	Pharmacy (B.Pharm.)	-	**2	**43	97	51
	Nursing Science (Diploma)	1010	940	730	739	577
	Nursing Science (B.N.Sc.)	112	***95	75	75	61
	Community Health (B.Comm.H.)	-	**14	-	-	-
	Diploma (Postgraduate)	202	124	109	106	45
	Master (M.Med.Sc.)	137	231	79	72	146
	M.D.Sc.	-	-	-	-	1
	Doctorate (Dr.Med.Sc.)	-	-	2	1	1
	Ph.D.	-	-	-	-	3
	Traditional Medicine(Diploma)	81	81	82	90	81

* Postgraduate only ** Bridge Course ***Generic Course

(a) "Arts and Science" includes arts disciplines such as history, geography, law etc. and science disciplines such as zoology, botany, chemistry, mathematics, etc.

**Table 10. Skills Training in TAV Institutions
under various Government Ministries**

(Indicator No.27)

Sr.	Institution	97/98	98/99	99/00	00/01	01/02
1.	Government Technical College	3317	4177	7888	8480	7325
2.	Technical High Schools	2094	2080	-	-	-
3.	State Agricultural Institute	784	695	498	647	826
4.	Agricultural High Schools	645	-	-	-	-
5.	Industrial Training Centres	231	98	109	256	285
6.	Technical Training Schools	-	200	231	241	148
7.	Commercial Schools	749	1490	555	881	578
8.	Machinery Repair & Maintenance Schs.	180	85	80	102	72
9.	Handicraft Schools	1244	556	984	707	566
10.	Myanma Lacquer-Ware Institute	39	37	49	36	27
11.	Weaving Schools	137	129	89	353	233
12.	Schools of Home Science	1900	1424	1287	1619	1883
13.	Cooperative Colleges	-	511	369	541	620
14.	Cooperative Training Schools	699	832	685	846	541
15.	Forestry Training Schools	1145	925	676	1005	990

Table 11. Percentage of Female Students by Education Level

(Indicator No.30)

Sr.	Education Level	97/98	98/99	99/00	00/01	01/02
1.	Primary Level	49.3	49.2	49.1	49.6	49.8
2.	Middle School Level	49.2	48.3	49.8	47.9	47.8
3.	High School Level	53.9	53.2	53.8	49.9	49.2
4.	Professional Institutions	67.0	67.0	69.6*	76.0	79.7
5.	Arts & Science Universities	62.0	62.0	62.6	59.5	60.3
6.	Government Technical College	27.0	36.9	47.5	48.6	52.7
7.	State Agricultural Institute	35.5	30.5	32.55	30.5	36.2

* Under Ministry of Education only

V. Labour Force

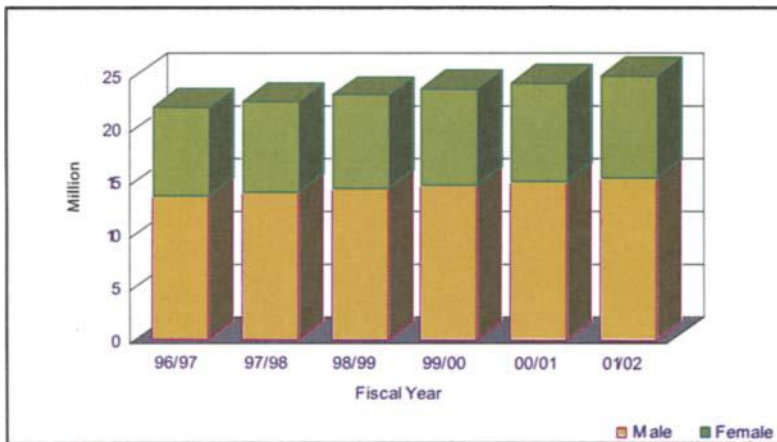
Labour force information is usually obtained from two sources: labour force surveys and population censuses. The volume of labour force and unemployment rate by sex were projected on the basis of information collected in the "1990 Labour Force Survey". With changing economic conditions and labour mobility patterns, reliability of the projected labour force and unemployment rates are in question.

Table 12. Labour Force, LFPR and Unemployment Rate

(Indicator No. 32 ,33 & 34)

Indicator		96/97	97/98	98/99	99/00	00/01	01/02
Total Labour Force (million)	M	13.57	13.92	14.28	14.65	15.02	15.41
	F	8.38	8.60	8.82	9.05	9.28	9.52
	T	21.95	22.52	23.10	23.70	24.30	24.93
Labour Force Participation Rate (LFPR)	M	78.57	79.09	78.63	79.19	79.68	80.26
	F	47.18	47.64	46.67	47.01	47.32	47.65
	T	62.66	63.17	62.35	62.78	63.18	63.63
Unemployment Rate	M	3.68	3.66	3.64	3.62	3.60	3.57
	F	4.77	4.77	4.76	4.75	4.74	4.73
	T	4.10	4.08	4.07	4.05	4.03	4.01

Chart III. Labour Force by Sex



Although the total labour force can be projected, characteristics of labour force such as labour force by education level, employed population by occupation and industry and employment status could not be projected. However, the structural characteristics of labour force, the employed population by occupation and industry groups as observed in the "1990 Labour Force Survey" are presented in Table 12 and Table 13.

Table 13. Employed Population by Occupation Group (Indicator No.36)
(in thousand)

Sr.	Occupation	Number	Percent
1	Legislators and Senior Officials & Managers	39.2	0.4%
2	Professionals	294.1	2.8%
3	Technical and Associate Professionals	211	2.0%
4	Clerks	221.5	2.1%
5	Services Workers & Shop & Market Sales Workers	1078.6	10.1%
6	Skilled Agricultural & Fishery Workers	3503.7	32.8%
7	Craft and Related Workers	1235.5	11.6%
8	Plant and Machine Operators and Assemblers	367	3.4%
9	Elementary Occupation	3717.1	34.8%
	Total	10667.7	100.0%

Note: 1990 Labour Force Survey (DOL).

Table 14. Employed Population by Industry Group (Indicator No.36)
(in thousand)

Sr.	Industry	Number	Percent
1	Agriculture, Hunting, Forestry and Fishing	6024.3	56.5%
2	Mining and Quarrying	101.7	1.0%
3	Manufacturing	1212.4	11.4%
4	Electricity, Gas and Water	18.9	0.2%
5	Construction	281.1	2.6%
6	Wholesales and Retail Trade and Restaurant & Hotels	1686.7	15.8%
7	Transport, Storage and Communication	403.3	3.8%
8	Financial Institution	28.5	0.3%
9	Community, Social and Personal Services	824.4	7.7%
10	Activities not Adequately Defined	86.4	0.8%
	Total	10667.7	100.0%

Note: 1990 Labour Force Survey (DOL).

VI. Economic Indicators

Statistics on the performance of the economy are provided by Planning Department (PD) under Ministry of National Planning and Economic Development. The statistics for recent years is termed either as 'provisional' or 'provisional actual'. However, the changes or the differences are minimal. The Consumer Price Index (CPI) is calculated and disseminated through its publication called the "Selected Monthly Economic Indicators" by Central Statistical Organization (CSO). GDP in constant producers' prices (real GDP) per capita GDP and other economic statistics together with CPI for Yangon are presented in Table 15. Table 16 gives total government expenditure (current and capital combined) by sectors.

Table 15. Indicators on Economic Performance

(Indicator No. 40,41,43 & 45)

Indicator	96/97	97/98	98/99	99/00	00/01	01/02
(a)Real GDP at 1985/86 prices						
- K. million	71042	75123	79460	88157	100275	
- Growth Rate (%)	6.4	5.7	5.8	10.9	13.7	
(b)Real GDP at 2000/01 prices						
- K. million					2552733	2842314
- Growth Rate (%)						11.3
(a)Real GDP per Capita at 1985/86 prices (Kyats)	1559	1619	1650	1794	2000	
(b)Real GDP per Capita at 2000/01 prices (Kyats)					50927	55581
Investment (K. million)	118313	150240	206912	255408	300981	413182
Export (K. million)	5488	6447	6756	8947	12736	17131
Import (K. million)	11779	14366	16872	16265	15073	18378
Consumer Price Index Union 1997=100	882.8 ^o	102.63	133.51	154.40	151.74	204.09

o : Yangon, 1986=100

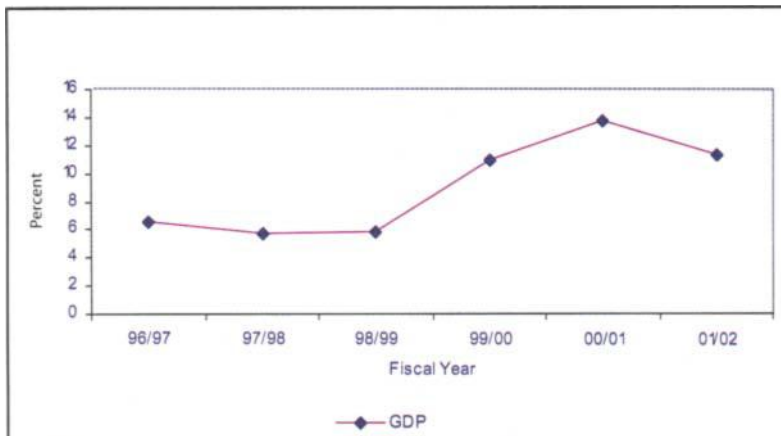
Chart IV. GDP Growth Rate

Table 16. Public Expenditure by Sector (Indicator No.44)

(million kyats)

Sr.	Sector	97/98	98/99	99/00	00/01	01/02
	Total	293760	388210	438435	562451	608787
1.	Agriculture	38402	46521	58829	83564	75304
2.	Livestock & Fishery	1666	2059	2693	10202	9467
3.	Forestry	7408	10119	14405	18637	20898
4.	Energy	269	516	613	1631	1652
5.	Mining	28413	29114	36508	46944	31777
6.	Processing & Manufacturing	17095	30295	33308	42603	68275
7.	Electric Power	7092	8088	19619	23882	28598
8.	Construction	42272	46031	54167	58082	84035
9.	Transportation	16495	20555	19743	18297	25753
10.	Communication	2626	3153	2957	4567	5224
11.	Trade	67320	115757	107207	111721	102156
12.	Social	16804	15954	19389	42988	48970
	<i>Education</i>	9207	8525	10149	27882	32010
	<i>Health</i>	3025	3020	3881	6997	8338
	<i>Others</i>	4572	4409	5359	8109	8622
13.	Financial Institutions	10324	12736	13767	16708	20333
14.	Administrative Organisations	37574	47312	55230	82625	86345
15.	Reserved Fund	-	-	-	-	-

Note : Beginning from Fiscal Year 1996/97, the Ministry of Transportation and Communication has been reorganized into two separate ministries.

VII. Food Availability and Land Use

Production, import and export of various commodities are obtained from the Planning Department under the Ministry of National Planning and Economic Development. The availability of food items for domestic consumption is obtained by adjusting the production figures with the figures of import and export for these items. Both Central Statistical Organization, Planning Department and Forest Department collect and publish information on land use: land under cultivation, reserved forests and other forests.

Table 17. Food Production and Land Use (Indicator No. 42, 46 & 47)

Indicator	96/97	97/98	98/99	99/00	00/01	01/02
Food availability per head (kg.)						
Rice	204.08	195.58	189.45	217.35	223.13	212.58
Edible Oil	7.10	7.71	7.99	8.75	10.79	10.03
Meat	5.89	6.38	6.52	7.71	9.01	10.06
Fish	17.29	17.90	19.19	22.68	24.05	26.32
Beans & Pulses	14.44	15.32	18.89	22.08	23.86	27.14
Cultivated land per head (acre)	0.6676	0.6538	0.6828	0.7446	0.7616	0.7656
Land Use ('000 Acres)						
Gross Area Sown	30422	30336	32882	36582	38177	39153
Reserved & Other Forests	84909	84903	84903	84896	84896	87413

VIII. Other Indicators

Most indicators described in this section are collected by CSO from the service statistics (administrative records) of various departments. At the moment, one important composite indicator, namely, "Number (Percentage) of Villages with School, Clinic and Electric Lighting" is not available although villages with school, with clinic and with electricity are available. However, indicators on transport, communication and information (public education) are given in Table 18.

Table 18. Transportation, Communication and Information Indicators
(Indicator No. 48, 50, 51, 52, 53 & 54)

Indicator	97/98	98/99	99/00	00/01	01/02
Number of Motor Vehicles (private) per 1,000 Population	6.3	6.3	6.8	6.7	6.6
Railway Traffic Passenger Miles (million)	2492	2528	2609	2763	2798
Railway Traffic Cargo-Ton Miles (million)	565.2	612.5	684	750	720.2
Number of Telephones	225315	240673	260579	282853	307056
Telephones per 1,000 inhabitants	4.94	5.09	5.31	5.52	5.99
Number of Radios	32293	35591	9380	18500	2198
Number of TV Sets	284642	260724	278161	296353	250876
Radios per 1,000 inhabitants	0.70	0.75	0.19	0.37	0.04
TV Sets per 1,000 inhabitants	6.24	5.51	5.67	6.34	5.12
Daily Newspapers No. in Myanmar Circulation ('000)*	405	373	393	403	437
English	25	24	24	25	25

Note: Figures for radios and television sets refer to licenses issued rather than the actual numbers.

* These figures refer to calendar year.

Chart V. Transportation and Communication Indicators

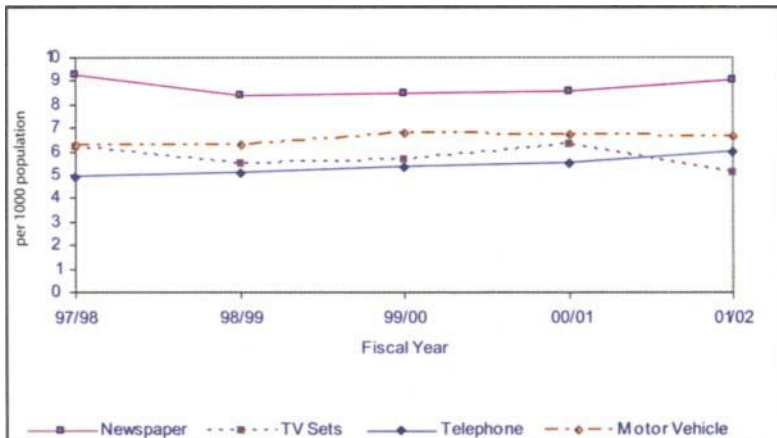


Table 19. Other Mass Media
(Indicator No. 55)

Indicator	97/98	98/99	99/00	00/01	01/02
Mass Media					
District Libraries	59	59	61	61	61
Township Libraries	241	243	244	245	248
Sub-Township Libraries	1	2	7	8	50
Readers	2999749	3006824	3311917	3567464	4524453
Registered Libraries	3	7	32	142	255
Cinemas	302	230	224	251	233
Video-Parlours	4386	10609	13880	20696	17108
VCD-OK	28	78	1299	7304	4890
Recording centres	1209	2481	2595	4286	4098

Table 20. Social Welfare Establishments
(Indicator No. 56)

Indicator	97/98	98/99	99/00	00/01	01/02
Social Welfare Establishments					
Residential Nurseries (GOs)					
(a) Number of Nurseries	6	6	6	6	6
(b) Number of Children	247	227	235	245	224
Pre-Primary School (GOs)					
(a) Number of Schools	20	20	20	20	20
(b) Number of Children	4686	4461	4320	4189	3810
Day Care Centres (GOs)					
(a) Number of Centres	41	41	41	41	41
(b) Number of Children	4062	3681	3491	3539	3529
Home for the Aged (NGOs)					
(a) Number of Homes (Registered)	30	30	30	33	37
(b) Number of the Elderly	1500	1503	1496	1585	1856

Table 21. Establishments under Myanmar Maternal and Child Welfare Association
(Indicator No. 57)

Indicator	97/98	98/99	99/00	00/01	01/02
Myanmar Maternal and Child Welfare Establishments					
(a) Early Childhood Development Centres and Day Care Centres	287	549	685	738	1034
(b) Number of Children	19286	19342	27347	31665	43043

Table 22. Total Number of Villages
(Indicator No. 58)

Indicator	97/98	98/99	99/00	00/01	01/02
Total Number of Villages*	65238	65212	65205	65175	65148
Number of Villages with School	34557	34574	34574	34627	34644
RHC or Sub-RHC ⁺	6980	6990	6729	7061	7106
Electric Lighting	1075	1089	1093	1095	1161
All 3 amenities	n.a	n.a	n.a	n.a	n.a
Percentage of Villages with School	53.0	53.0	53.0	53.1	53.2
RHC or Sub-RHC ⁺	10.7	10.7	11.3	10.8	10.9
Electric Lighting	1.6	1.6	1.6	-	-
All 3 amenities	n.a	n.a	n.a	n.a	n.a

Note: * Some Villages upgraded to Small Towns

+ Basic Health Division, DOH

Table 23. Crime Rate
(Indicator No. 59)

Indicator	1997	1998	1999	2000	2001
Crime Rate ^Ø (per 100,000 pop ⁿ)	256.26	407.42	391.03	432.98	456.54
Major Crime	4.62	2.97	1.93	2.98	2.56
Other Crime	113.9	98.8	93.54	93.68	83.38
Preventative Crime	298.23	305.62	295.54	336.3	369.93

Note: Ø The data for the years 1998, 1999, 2000 and 2001 are inclusive of prevention.

HUMAN RESOURCES DEVELOPMENT INDICATORS

The first HRDI Handbook was published in 1997 and this is the seventh consecutive publication of such a handbook. More indicators are included in this booklet, and it is expected to include additional indicators from the public and the private sectors, in the forthcoming publications. Comments and suggestions are invited by the Department of Labour from users on this publication. Suggestions will be incorporated in the future issues.

Sr.	Indicator		96/97	97/98	98/99	99/00	00/01	01/02	
1.	Total Population (Million) (DOP)	Total	45.57	46.40	48.16	49.13	50.13	51.14	
		Male	22.63	23.04	23.91	24.40	24.91	25.42	
		Female	22.94	23.36	24.25	24.73	25.22	25.72	
2.	Crude Birth Rate # (CSO)	Union	29.5	28.9	28.7	26.5	25.9	25.7(p)	
		Rural	30.0	29.2	29.1	27.1	26.4	26.3(p)	
		Urban	28.1	27.8	27.5	24.5	24.2	23.9(p)	
3.	Crude Death Rate # (CSO)	Union	9.6	8.8	8.6	5.4*	7.1	6.9(p)	
		Rural	9.9	8.9	8.7	5.7*	7.3	7.1(p)	
		Urban	8.8	8.5	8.2	5.1*	6.3	6.2(p)	
4.	Total Fertility Rate (CSO) (Per 1000live-birth)	Rural	n.a.	n.a.	n.a	n.a	n.a	n.a	
		Urban	3.48	3.45	3.43	3.05	2.96	2.93(p)	
5.	Under 5 Mortality Rate (U5MR) (Per 1000live-birth) (CSO)	Rural	n.a.	n.a.	n.a	85.16*	n.a	n.a	
		Urban	72.34	72.28	72.20	65.12*	73.02	73.14(p)	
6.	Maternal Mortality Ratio # (MMR) (Per 1000live-birth) (CSO)	Union	1.7	1.5	1.6	2.55*	1.7	1.6(p)	
		Rural	1.9	1.7	1.8	2.81*	1.9	1.8(p)	
		Urban	1.0	1.0	1.0	1.78*	1.1	1.0(p)	
7.	Life Expectancy at Birth (years) (CSO)	Male- Union	60.2	60.2	60.4	60.5	60.6	61.0(p)	
			Rural	60.1	60.1	60.2	60.3	60.4	60.8(p)
			Urban	60.6	60.6	60.8	61.0	61.1	61.5(p)
		Female- Union	62.8	62.5	63.1	63.3	63.4	63.9(p)	
			Rural	62.2	62.3	62.5	62.7	62.8	63.3(p)
			Urban	64.5	64.6	64.9	65.1	65.1	65.6(p)
8.	Percentage of Severely Malnourished Children Under 5 (DHP)	Union	-	12.6	-	7.9 ⁺	-	-	
9.	Contraceptive Prevalence Rate or Prevalence Rate (CPR: %) (DHP, DOP)	Union	32.7**	43.7 ⁺	-	49.9 ⁺	52.7	55.1	
10.	Percentage of Low Birth Weight Babies (DHP)		n.a.	n.a	n.a	10	n.a	n.a	
11.	Percentage Coverage of Universal Child Immunization (DHP)	Union	86.0	89.0	-	79.9 ^x	-	-	

Note: * National Mortality Survey, 1999, CSO

** Fertility and Reproductive Health Survey 1997, DOP

+ (72) Reproductive Health Services Project Townships

These figures represent calendar year. Obtained from the regular reporting system of vital registration and they may differ if surveys are conducted.

x Multiple Indicator Cluster Survey (2000)

(p) Provisional

Sr.	Indicator	96/97	97/98	98/99	99/00	00/01	01/02
12.	Population per Physician (<i>DHP</i>)	3451	3311	3352	3290	3432	3148
13.	Population per Nursing Personnel (<i>DHP</i>)	4614	3921	3775	3723	3646	3370
14.	Population per Hospital Bed (<i>DHP</i>)	1588	1602	1591	1558	1602	1547
15.	No. of Villages per Rural Health Care Centre	47.1	45.3	46.9	43.8	46.4	46.1
	No. of Villages per Rural Health Care Centre and Sub-Centres (<i>DOH</i>)	-	-	9.31	11.0	9.2	9.2
16.	Traditional Medicine Hospitals						
	50 bedded hospitals (Public Sector)	-	-	1	2	2	2
	16 bedded hospitals (Public Sector)	1	2	4	5	8	9
	Number of Dispensary Dispensaries (Public Sector)	168	179	183	194	204	214
	Number of Private Traditional Clinic (Estimated)	-	-	-	-	830	884
	Number of Registered Traditional Medical Practitioners	-	-	-	-	8001	8516
	Number of Non-registered Traditional Medical Practitioners (Estimated) (<i>DTM</i>)	-	-	-	-	8723	8774
17.	Percentage of RHC which are adequately supplied with Staff, Equipment and Essential Drugs Union (<i>DHP</i>)	-	-	-	70.68	80.9	91
18.	Percentage of Population Accessible to Safe and Convenient Drinking Water (<i>DHP</i>)						
	Union	57.0	66.0	-	71.5 ^x	-	-
	Rural	50.0	59.9	-	65.8 ^x	-	-
	Urban	78.0	87.9	-	89.2 ^x	-	-
19.	Percentage of Population Accessible to Proper Sanitation (<i>DHP</i>)						
	Union	45.7	45.2	-	63.1 ^x	-	-
	Rural	39.2	39.0	-	56.5 ^x	-	-
	Urban	65.1	64.5	-	83.6 ^x	-	-
20.	Gross Enrollment Ratios by Level (<i>DEPT, MERB</i>)						
	P	99.7	97.6	95.2	90.5	89.6	90.7
	M	39.2	43.5	40.7	40.4	40.7	42.5
	H	20.8	22.7	30.0	32.0	30.9	31.2
21.	Net Enrollment Ratios by Level (<i>DEPT, MERB</i>)						
	P	74.8	75.2	77.0	77.0	77.5	78.0
	M	34.3	37.0	37.8	37.8	38.2	39.5
	H	18.2	19.3	25.5	25.5	27.2	27.6
22.	Transition Rates bet. Levels (<i>DEPT, MERB</i>)						
	P to M	66.4	66.3	68.9	68.9	68.2	67.9
	M to H	91.0	89.1	91.2	91.2	94.4	93.1
23.	Retention Rates by Level (<i>DEPT</i>)						
	P	40.4	47.5	48.5	48.5	53.7	56.9
	M	61.1	62.4	64.3	64.3	69.2	75.0
	H	88.1	88.0	99.1	99.3	99.1	99.0
24.	Internal Efficiency of Primary Education (<i>DEPT, MERB</i>)						
	Efficiency(%)	49.80	75.9	73.1	72.0	73.5	78.4
	Graduates(%)	35.10	56.8	54.3	55.6	56.7	62.1

Sr.	Indicator	96/97	97/98	98/99	99/00	00/01	01/02
25.	Enrollment in: Basic Education						
	Primary						
	Both Sexes	5202866	4799006	4848025	4676619	4663701	4757760
	Male	2664578	2434631	2466121	2378609	2352209	2386161
	Female	2538288	2364375	2381904	2298010	2311492	2371599
	Middle						
	Both Sexes	1653394	1642232	1638189	1624861	1667018	1741212
	Male	845799	838035	850222	815001	868143	908880
	Female	807595	804197	787967	809860	798875	832332
	High						
	Both Sexes	424438	421582	579270	626597	620694	627117
	Male	193738	194423	276865	289308	310813	318300
	Female	230700	227159	302405	337289	309881	308817
	Monastic Education						
	Primary						
	Both Sexes	94394	94454	90328	100511	114326	131565
	Male	65759	65799	58582	60097	67090	74557
	Female	28635	28655	31746	40414	47236	57008
	Middle						
	Both Sexes	-	-	5232	7762	10737	14279
	Male	-	-	3312	4842	6593	8316
	Female	-	-	1920	2920	4144	5963
	(DEPT, DPPS)						
26.	Number of Graduates by Specialization						
	Buddha Desana (Diploma)	-	16	-	9	-	-
	Buddha Dhamma (Diploma)	-	87	-	46	59	68
	Buddhism (M.A.)	-	11	5	11	20	14
	Buddhism (B.A.)	-	105	85	63	81	82
	Buddha Dhamma (B.A.)	-	-	-	-	43	30
	Engineering & Architecture	959	1199	1028	1097	1163	1376
	Engineering and Architect (B.E.)	-	-	-	-	1031	1227
	Engineering and Architect (M.E.)	-	-	-	-	75	91
	Number of Ph. D.	-	-	-	-	57	58
	Computer Science & Technology	72	256	242	191	405	1888
	Computer Science (B.C.Sc.)	-	-	-	-	100	850
	Computer Technology (B.C. Tech.)	-	-	-	-	30	331
	Computer Science (B.C.Sc., Hons.)	-	-	-	-	111	291
	Computer Technology (B.C.Tech.,Hons.)	-	-	-	-	15	64
	Computer Science (M.C.Sc.)	-	-	-	-	10	117

Sr.	Indicator	96/97	97/98	98/99	99/00	00/01	01/02
	Computer Technology (M.C.Tech.)	-	-	-	-	7	42
	Computer Information (M.I.Sc.)	-	-	-	-	115	193
	Computer Applied Science (M.A.Sc.)	-	-	-	-	17	-
	Economics	1063	126*	91*	897	2218	2221
	B.A. (Eco.)						1100
	B.Econ.(Eco.)						286
	B.Econ.(Hons.)						1
	B.Econ.(Stat.)						119
	B.Econ.(Stat.) (Hons.)						5
	B.Com.						613
	B.Com .(Hons.)						6
	D.E.S.						17
	D.S.						13
	D.M.A.						46
	M.Econ.(Eco.)						6
	M.Econ.(Stat.)						4
	M.Com.						5
	Education	331	1196	1114	1146	1157	1552
	B.Ed.						1460
	Diplomas						31
	M.Ed.						61
	Forestry	39	53	46	40	49	55
	Veterinary	108	121	113	104	133	95
	B.V.Sc.	108	116	111	101	116	90
	M.Phil.	0	5	1	2	1	-
	M.V.Sc.	0	0	1	1	16	5
	Arts & Science	14440	1735	6962	47209	79763	79303
	Arts						42296
	B. A.						41282
	Diplomas						179
	M.A.						773
	M.R.S.						62
	Science						37007
	B.Sc.						35372
	Diplomas						15
	M.Sc.						1455
	M.R.S						165
	Foreign Languages	220	241	481	198	191	190
	Diplomas						187
	M.A.						3

* Under Ministry of Education only

Sr.	Indicator	96/97	97/98	98/99	99/00	00/01	01/02	
	Agriculture	217	7	6	251	244	229	
	Master of Agriculture(M.Agri.Sc.)	-	7	6	16	9	15	
	Agriculture(B.Agri.Sc.)	217	-	-	235	235	214	
	Health	1278	1957	1868	2066	1709	2042	
	Medical Sc.(M.B.,B.S.)	78	448	404	912	503	1035	
	Dental Sc.(B.D.S)	-	48	40	52	52	45	
	Paramedical Sc.(B.P.Sc.)	-	-	**18	***64	64	77	
	Pharmacy(B.Pharm.)	-	-	**2	**43	97	51	
	Nursing Sc.(Diploma)	998	1010	940	730	739	577	
	Nursing Sc.(B.N.Sc.)	-	112	***95	75	75	61	
	Community Health (B.Comm.H.)	-	-	**14	-	-	-	
	Diploma (Postgraduates)	8	202	124	109	106	45	
	Master (M.Med.Sc.)	194	137	231	79	72	146	
	M.D.Sc.	-	-	-	-	-	1	
	Doctorate (Dr. Med.Sc.)	-	-	-	2	1	1	
	Ph.D.	-	-	-	-	-	3	
	Traditional Medicine (Diploma)	-	81	81	82	90	81	
	<i>(DLF, MERB, DAP, DMS, FD, DAST, DTM, DPPS)</i>							
27.	Skills Training	3954	3317	4177	7888	8480	7325	
	in Technical, Agricultural	1130	2094	2080	-	-	-	
	and Vocational Institutions	545	784	695	498	647	826	
	by Skill Level	498	645	-	-	-	-	
	*GTC	92	231	98	109	256	285	
	*THS	-	-	200	231	241	148	
	*SAI	284	749	1490	555	881	578	
	*AHS	118	180	85	80	102	72	
	*ITC	823	1244	556	984	707	566	
	*TIS	20	39	37	49	36	27	
	Commercial Schools	127	137	129	89	353	233	
	Machinery Repair & Maintenance Schools	1853	1900	1424	1287	1619	1883	
	Handicraft Schools	340	-	511	369	541	620	
	Myanma Lacquer-Ware Institute	1952	699	832	685	846	541	
	Weaving Schools	918	1145	925	676	1005	990	
	Schools of Home Science	<i>(DOC, DTVE, DSW, DAP, DCI, FD, DMIP)</i>						
	Cooperative Colleges							
	Cooperative Training Schools							
	Forestry Training Schools							

*GTC = Government Technical College
 *THS = Technical High School
 *SAI = State Agriculture Institute
 *AHS = Agriculture High School
 *ITC = Industrial Training Centre

*TTS = Technical Training School
 * = Postgraduate only
 ** = Bridge Course
 *** = Generic Course

Sr.	Indicator		96/97	97/98	98/99	99/00	00/01	01/02
28.	Adult Literacy Rate	Union	87.1	88.4	89.7	89.7	91.4	91.8
		Male	89.0	89.8	90.6	91.4	91.8	92.2
		Female	85.1	86.9	88.7	90.6	91.0	91.4
	(DEPT)							
29.	Mean Years of Schooling Per Person Aged 5 & Over	Union	6.2	6.3	6.5	6.7	6.8	7.0
	(ENVIPRO)							
30.	Percentage of Female Students By Level	P	48.8	49.3	49.2	49.1	49.6	49.8
		M	49.1	49.2	48.3	49.8	47.9	47.8
		H	54.5	53.9	53.2	53.8	49.9	49.2
		Professional Inst.	66.7	67.0	67.0	*69.6	76.0	79.7
		Arts & Science	62.3	62.0	62.0	62.6	59.5	60.3
		GTC	27.1	27.0	36.9	47.5	48.6	52.7
	(DEPT, MERB, DAP, DTVE)	SAI	35.4	35.5	30.5	32.55	30.5	36.2
31.	Percentage of Senior Official Positions Held by Women In Public Sector		13.88	14.72	17.60	19.29	19.40	22.92
	(CSO)							
32.	Total Labour Force (million)	Both Sexes	21.95	22.52	23.10	23.70	24.30	24.93
		Male	13.57	13.92	14.28	14.65	15.02	15.41
		Female	8.38	8.60	8.82	9.05	9.28	9.52
	(DOL)							
33.	Labour Force Participation Rate (percent)	Both Sexes	62.66	63.17	62.35	62.78	63.18	63.63
		Male	78.57	79.09	78.63	79.19	79.68	80.26
		Female	47.18	47.64	46.67	47.01	47.32	47.65
	(DOL)							
34.	Unemployment Rate (per cent)	Both Sexes	4.10	4.08	4.07	4.05	4.03	4.01
		Male	3.68	3.66	3.64	3.62	3.60	3.57
		Female	4.77	4.77	4.76	4.75	4.74	4.73
	(DOL)							
35.	Labour Force by Ed. Level (per cent)	Illiterate						9.99
		Literate						47.6
		Primary						27.3
		Secondary						12.4
		Higher Ed.						2.7
	(DOL)							
			LFS 1990 Figures Re- produced					

* Under Ministry of Education only

Sr.	Indicator	96/97	97/98	98/99	99/00	00/01	01/02
36.	Percentage Distribution of Employed Population <i>by Occupation Group</i>						100.0
	Legislators, Senior Off. & Managers						0.4
	Professionals						2.8
	Technical & Associate Professionals						2.0
	Clerks						2.1
	Services, Shop, etc. sales workers						10.1
	Skilled Agri. & Fishery Workers						32.8
	Craft and Related Workers						11.6
	Machine Operators and Assemblers						3.4
	Elementary Occupation						34.8
	<i>by Industry Group</i>						100.0
	Agri. , Hunting, Forestry & Fishing						56.5
	Mining and Quarrying						1.0
	Manufacturing						11.4
	Electricity, Gas and Water						0.2
	Construction						2.6
	Trade, Restaurants & Hotels						15.8
	Transport, Storage & Communication						3.8
	Financial Institution						0.3
	Social and Personal Services						7.7
	Activities not Adequately Defined						0.8
	(DOL)						
37.	Percentage Distribution of Employed Population <i>by Employment Status</i>						1.5
	Employer Own Acc. Worker						35.3
	Employee						30.6
	Unpaid Family Worker						32.6
	Others						0.1
	(DOL)						
38.	No. of Establishments <i>by Ownership</i>						
	Public	30874		20652		24229	-
	Cooperative	3261		2435		2223	1160
	Private	67036		84760		98410	100970
	Joint Venture	2098		1129		888	837
	Pct. Change in Establishments <i>By Ownership</i>						
	Public	36.2%		-33.10%		17.32%	-
	Cooperative	-58.4%		-25.32%		-8.71%	-47.82%
	Private	39.5%		26.43%		16.01%	2.60%
	Joint Venture	606.4%		-46.18%		-21.35%	-5.74%
	(DOL,DOC)						

Note: (1) The values of indicators No. 35, 36 and 37 are reproduced from 1990 Labour Force Survey. In the absence of "Population Censuses", large scale "Labour Force Surveys" need to be conducted in order to reflect the changing pattern and the quality of the Labour force.

(2) Information on the number of establishments by ownership (i.e. Indicator 38) was obtained from the "establishment surveys" conducted once every two years by the Department of Labour. But since 2002, this survey is being conducted every year. These surveys covered only in the private sector that are situated in urban areas, self employed and casual labour.

Sr.	Indicator	96/97	97/98	98/99	99/00	00/01	01/02
39.	Coverage of Social Security Scheme for Eligible Employed Persons (SSB) Both Sexes Male Female	364834 244474 120360	387253 253141 134112	414289 259880 154409	451007 268651 182356	508877 283753 225124	531679 302776 228903
40.	(a)Real GDP at 1985/86 prices - K. million - Growth Rate (%) (b)Real GDP at 2000/01 prices - K. million - Growth Rate (%) (PD)	71042 6.4	75123 5.7	79460 5.8	88157 10.9	100275 13.7 2552733	2842314 11.3
41.	(a)Real GDP per Capita at 1985/86 prices (Kyats) (b)Real GDP per Capita at 2000/01 prices (Kyats) (PD)	1559	1619	1650	1794	2000 50927	55581
42.	Food Availability per Head(kg) Rice Edible Oil Meat Fish (PD) Beans & Pulses	204.08 7.10 5.89 17.29 14.44	195.58 7.71 6.38 17.90 15.32	189.45 7.99 6.52 19.19 18.89	217.35 8.75 7.71 22.68 22.08	223.13 10.79 9.01 24.05 23.86	212.58 10.03 10.06 26.32 27.14
43.	Investment (K. million) Exports (K. million) Imports (K. million) (PD)	118313 5488 11779	150240 6447 14366	206912 6756 16872	255408 8947 16265	300981 12736 15073	413182 17131 18378
44.	Public Expenditure by Sector (K. million) Total Agriculture Livestock & Fishery Forestry Energy Mining Processing & Manufacturing Electric Power Construction Transportation Communication Trade Social Education Health Others Financial Institutions Administrative Organizations (PD) Reserve Fund	190180 30244 1449 5901 6614 1961 11828 4532 26215 12761 2148 25847 17120 9974 2731 4415 8551 35009 -	293760 38402 1666 7408 269 28413 17095 7092 42272 16495 2626 67320 16804 9207 3025 4572 10324 37574 -	388210 46521 2059 10119 516 29114 30295 8088 46031 20555 3153 115757 15954 8525 3020 4409 12736 47312 -	438435 58829 2693 14405 613 36508 33308 19619 54167 19743 2957 107207 19389 10149 3881 5359 13767 55230 -	562451 83564 10202 18637 1631 46944 42603 23882 58082 18297 4567 111721 42988 27882 6997 8109 16708 82625 -	608787 75304 9467 20898 1652 31777 68275 28598 84035 25753 5224 102156 48970 32010 8338 8622 20333 86345 -
45.	Consumer Price Index (CSO) Union (1997=100)	882.8 ⁰	102.63	133.51	154.40	151.74	204.09
46.	Cultivated Land per Head (Acres) (CSO,SLRD)	0.6676	0.6538	0.6828	0.7446	0.7616	0.7656

Sr.	Indicator	96/97	97/98	98/99	99/00	00/01	01/02
47.	Land Use('000 acre) Gross Area Sown	30422	30336	32882	36582	38177	39153
	Reserved & Other Forests (SLRD,FD)	84909	84903	84903	84896	84896	87413
48.	Number of Motor Vehicles (Private) Per 1,000 Population	6.0	6.3	6.3	6.8	6.7	6.6
	Number of Motor Vehicles (Total) Per 1,000 Population (RTA)	7.8	8.3	8.3	8.9	8.8	8.8
49.	Percentage distribution of Energy Consumption in Yangon City by Type #						
	Firewood		74.64				
	Charcoal		17.32				
	Kerosene		-				
	Electricity		6.18				
	Gas		0.25				
50.	Railway Traffic Passenger Miles (million) (MR)	2725	2492	2528	2609	2763	2798
	Railway Traffic Cargo-Ton Miles (million) (MR)	577.7	565.2	612.5	684	750	720.2
52.	Number of Telephones	199017	225315	240673	260579	282853	307056
	Telephones per 1,000 Inhabitants (MPT)	4.45	4.94	5.09	5.31	5.52	5.99
53.	Number of Radios	13007	32293	35591	9380	18500	2198
	Number of TV Sets	282504	284642	260724	278161	296353	250876
	Radios per 1,000 Inhabitants	0.29	0.70	0.75	0.19	0.37	0.04
	TV Sets per 1,000 Inhabitants (MPT)	6.31	6.24	5.51	5.67	6.34	5.12
54.	Daily Newspaper: No. Myanmar in Circulation('000)*	425	405	373	393	403	437
	English (CSO,NPE)	24	25	24	24	25	25
55.	Mass Media						
	District Libraries	53	59	59	61	61	61
	Township Libraries	240	241	243	244	245	248
	Sub-Township Libraries	-	1	2	7	8	50
	Readers	2435035	2999749	3006824	3311917	3567464	4524453
	Registered Libraries (Private)	5	3	7	32	142	255
	Cinemas	328	302	230	224	251	233
	Video-Parlours	3236	4386	10609	13880	20696	17108
	VCD-OK	-	28	78	1299	7304	4890
	Recording centres (IPRD,MMPE)	980	1209	2481	2595	4286	4098

Notes: # Household income and expenditure survey, 1995,1997.

* These figures refer to calendar year.

Sr.	Indicator	96/97	97/98	98/99	99/00	00/01	01/02
56.	Social Welfare Establishments						
	Residential Nurseries (GOs)						
	(a) Number of Nurseries	6	6	6	6	6	6
	(b) Number of Children	257	247	227	235	245	224
	Pre-Primary School (GOs)						
	(a) Number of Schools	20	20	20	20	20	20
	(b) Number of Children	4933	4686	4461	4320	4189	3810
	Day Care Centres (GOs)						
	(a) Number of Centres	41	41	41	41	41	41
	(b) Number of Children	4342	4062	3681	3491	3539	3529
	Home for the Aged (NGOs)						
	(a) Number of Homes (Registered)	27	30	30	30	33	37
	(b) Number of the Elderly (DSW)	1288	1500	1503	1496	1585	1856
57.	Establishments under Myanmar Maternal and Child Welfare Association						
	(a) Early Childhood Development Centres and Day Care Centres		287	549	685	738	1034
	(b) Number of Children (MMCWA)		19286	19342	27347	31665	43043
58.	Total Number of Villages*	65238	65238	65212	65205	65175	65148
	Number of Villages with School RHC or Sub-RHC ⁺	32603	34557	34574	34574	34627	34644
	Electric Lighting	6974	6980	6990	6729	7061	7106
	All 3 amenities	1051	1075	1089	1093	1095	1161
	Percentage of Villages with School RHC or Sub-RHC ⁺	n.a.	n.a.	n.a.	n.a.	n.a.	n.a.
	Electric Lighting	50.0	53.0	53.0	53.0	53.1	53.2
	All 3 amenities	10.7	10.7	10.7	11.3	10.8	10.9
	(GAD, DHP, MERB, MEPE, DEPT)	1.6	1.6	1.6	1.6	-	-
		n.a.	n.a.	n.a.	n.a.	n.a.	n.a.
59.	Crime Rate^o (per 100,000 popⁿ)	361.32	256.26	407.42	391.03	432.98	456.54
	Major Crime		4.62	2.97	1.93	2.98	2.56
	Other Crime		113.9	98.8	93.54	93.68	83.38
	Preventative Crime (CSO, MPF)		298.23	305.62	295.54	336.3	369.93

Note: * Some Villages upgraded to Small Towns

Ø The data for the year of 1998, 1999, 2000 and 2001 are inclusive of prevention. These figures represent calendar year.

+ Basic Health Division, DOH

Additional HRD Indicators

Dependency Ratio

Sr.	Indicator	97/98	98/99	99/00	00/01	01/02
1.	Dependency Ratio Total	61.9	61.7	61.4	61.4	61.4
	Old-age DR (65+)	8.3	8.4	8.5	8.6	8.6
	Young DR (0-14)	53.6	53.3	52.9	52.8	52.8
	Dependency Ratio Total	69.1	68.9	68.7	68.7	68.7
	Old-age DR (60+)	13.1	13.2	13.4	13.5	13.5
	Young DR (0-14)	56.0	55.6	55.3	55.2	55.2

Source - Department of Population, DOP.

Single Leading Causes of Morbidity by Calendar Year(1998-2001)

Sr.	1998	%	1999	%	2000	%	2001	%
1.	Malaria	15.8	Malaria	15.6	Malaria	12.4	Malaria	12.1
2.	Single spontaneous delivery	9.8	Single spontaneous delivery	9.9	Single spontaneous delivery	10.5	Single spontaneous delivery	9.1
3.	Other injuries of specified, unspecified and multiple body regions	8.7	Other injuries of specified, unspecified and multiple body regions	8.8	Other injuries of specified, unspecified and multiple body regions	9.4	Other injuries of specified, unspecified and multiple body regions	8.7
4.	Diarrhoea and gastroenteritis of presumed infectious origin	5.0	Diarrhoea and gastroenteritis of presumed infectious origin	5.8	Diarrhoea and gastroenteritis of presumed infectious origin	4.5	Diarrhoea and gastroenteritis of presumed infectious origin	4.8
5.	Other pregnancies with abortive outcome	4.8	Other pregnancies with abortive outcome	4.6	Other pregnancies with abortive outcome	4.4	Other complications of pregnancy and delivery	4.6

Source - Health Management Information System, DHP.

Single Leading Causes of Mortality by Calendar Year (1998-2001)

Sr.	1998	%	1999	%	2000	%	2001	%
1.	Malaria	18.5	Malaria	18.3	Malaria	15.6	Malaria	9.8
2.	Other diseases of respiratory system	6.0	Pulmonary Tuberculosis	9.4	Pulmonary Tuberculosis	6.3	Other diseases of respiratory system	4.8
3.	Pulmonary Tuberculosis	5.7	Stroke, not Specified as hemorrhage or infarction	4.8	Stroke, not Specified as hemorrhage or infarction	4.9	Pulmonary Tuberculosis	4.7
4.	Other injuries of specified, unspecified and multiple body regions	4.8	Other diseases of respiratory system	3.8	Other diseases of respiratory system	4.7	Pneumonia	3.5
5.	Stroke, not specified as hemorrhage or infarction	4.6	Other injuries of specified, unspecified and multiple body regions	3.7	Other injuries of specified, unspecified and multiple body regions	4.0	Stroke, not specified as hemorrhage or infarction	3.5

Source - Health Management Information System, DHP.

**DEFINITIONS OF HUMAN RESOURCES DEVELOPMENT INDICATORS
CONTENTS**

1. Population by age and sex
2. Crude Birth Rate
3. Crude Death Rate
4. Total Fertility Rate
5. Under 5 Mortality Rate (U5MR)
6. Maternal Mortality Ratio (MMR)
7. Life Expectancy at Birth
8. Percentage of Moderate to Severely Malnourished Children under 5
9. Contraceptive Prevalence Rate or Prevalence Rate (CPR)
10. Percentage of Low Birth Weight Babies
11. Percentage Coverage of Universal Child Immunization
12. Population per Physician
13. Population per Nursing Personnel
14. Population per Hospital Bed
15. Number of Villages per Rural Health Centre and Sub-centre
16. Traditional Medicine Hospitals
17. Percentage of RHC which are Adequately Supplied with Staff, Equipment and Essential Drugs
18. Percentage of Population Accessible to Safe and Convenient Drinking Water
19. Percentage of Population Accessible to Proper Sanitation
20. Gross Enrolment Ratios by Level
21. Net Enrolment Ratios by Level
22. Transition Rates between Levels
23. Retention Rates by Level
24. Internal Efficiency of Primary Education
25. Enrolment in Basic and Monastic Education
26. Number of Graduates by Specialization

27. Number of Persons Trained in Technical, Agricultural and Vocational Institutions by Skill Level
28. Adult Literacy Rate
29. Mean Years of Schooling per Person Aged 5 and Over
30. Percentage of Female Student by Level
31. Percentage of Senior Official Positions Held by Women in Public Sector
32. Total Labour Force
33. Labour Force Participation Rate (LFPR)
34. Unemployment Rate
35. Labour Force by Education Level
36. Employed Population by Occupation and Industry Group
37. Employed Population by Employment Status
38. Establishments and their Growth by Ownership
39. Coverage of Social Security Scheme for Registered Employed Persons
40. Real GDP and Growth Rate of GDP
41. Real GDP per Head and Growth Rate
42. Food Availability per Head
43. Investment, Exports and Imports
44. Public Expenditure by Sector
45. Consumers' Price Index
46. Cultivated Land per Head
47. Land Use (under Cultivation, Forest and Others)
48. Number of Motor Vehicles per 1,000 Population
49. Energy Consumption by Type
50. Railway Traffic Passenger Miles
51. Railway Traffic Cargo-Ton Miles
52. Number of Telephones and Telephones per 1,000 Inhabitants
53. Daily Newspaper: Number of Circulation
54. Number of Radios and TV Sets, and Radios and TV Sets per 1,000 Inhabitants
55. Number of IPRD Libraries
56. Social Welfare Establishments
57. Myanmar Maternal and Child Welfare Establishments
58. Number (Percentage) of Villages with School, Clinic and Electric Lighting
59. Crime Rate

**BRIEF DEFINITIONS OF
HUMAN RESOURCES DEVELOPMENT INDICATORS**

1. Population by Age and Sex

Total population, from census, is comprised of all persons permanently residing in the Union of Myanmar at the enumeration point of time including inmates of institution, moving population, foreigners, armed services personnel and those who are temporarily abroad; but excludes foreign diplomatic personnel and their families (DOP, 1986).

Censuses provide population at the national and sub-national levels by age groups and sex. For non-census years, population by age and sex is estimated based on the information available from censuses and surveys.

Sex ratio is the number of males per 100 females in the reference age group.

Dependency ratio is the number of dependent population per 100 working-age population.

2. Crude Birth Rate

The crude birth rate per 1,000 population represents the ratio of the total number of live births reported in a calendar year to the estimated mid-year population.

3. Crude Death Rate

The crude death rate per 1,000 population represents the ratio of the total number of deaths reported in a calendar year to the estimated mid-year population.

4. Total Fertility Rate

The total fertility rate may be interpreted as the total number of live births that would occur to a woman, if she was to go through her reproductive years, bearing children at the age specific fertility rates prevailing in a given year. In other words, it is the number of children a woman would have if she experienced the prevailing age specific fertility rates of all women in a given year.

It is a summary index of period fertility, that is the fertility of a particular year or period of a given population.

5. Under 5 Mortality Rate (U5MR)

Under 5 Mortality Rate is the probability of dying between birth and exact age five. It can also be expressed as the number of deaths to children aged (0-4) years in a given year per 1,000 live births in the same year. Another variant uses the denominator as 1,000 mid-year population of children aged (0-4). This indicator reflects the socio-economic development conditions of an area or sub-group.

In Myanmar, the first definition is officially used, however, U5MR could also be computed using the second definition, if necessary.

6. Maternal Mortality Ratio (MMR)

Maternal Mortality Ratio (MMR) is the number of maternal deaths i) due to pregnancy related causes and not incidental causes (malaria, accidents, suicides) ii) during pregnancy and up to and including 42 days from the termination of the pregnancy irrespective of the site and duration of pregnancy per 1,000 (or 100,000) live births in a given year.

This rate reflects nutritional status, reproductive health awareness of mothers as well as impacts of social environment and maternal health care programme and services.

7. Life Expectancy at Birth

Life expectancy is the average number of additional years a person can expect to live, based on the age specific death rates for a given year.

This measure is influenced significantly by gender and subgroup, and thus is often computed separately. Life expectancy at birth is the most cited measure.

8. Percentage of Moderate to Severely Malnourished Children under 5

The children under 5 years with the body weight lying in red zone (3 standard deviations under the average normal weight for age) are assumed as severely malnourished children.

Thus, this indicator is computed as the ratio of children under 5 years of age who suffered from severely malnourished to the total number of children under 5 years of age in a given year.

9. Contraceptive Prevalence Rate (CPR)

Percentage of currently married women of childbearing age (15-49) who are using, or whose husbands are using any form of contraception with the intention of spacing and/or limiting births. It covers both modern (more effective) and traditional (less effective) methods.

10. Percentage of Low Birth Weight Babies

Number of live births having body weight less than 2,500 grams per 100 live births.

11. Percentage Coverage of Universal Child Immunization

Number of infants under 1 covered by universal child immunization per 100 infants under 1 year of age in a given year. Universal child immunization programme includes one dose of BCG at birth, 3 doses of polio and DPT at the baby's age of 1.5, 2.5 and 3.5 months, and one dose of measles at the baby's age of 9 months for every child.

12. Population per Physician

Number of population per physician in a given year. Physicians are those in the medical sector trained as health professionals.

13. Population per Nursing Personnel

Number of population per nursing personnel in a given year. The nursing personnel include all nurses (Lady Health Visitors and Midwives are not included).

14. Population per Hospital Bed

Number of population per hospital bed in a given year.

15. (a) Number of Villages per Rural Health Centre

Average number of villages served by a rural health centre, both in preventive and curative aspects in a given year.

(b) Number of Villages per Rural Health Centre and Sub-centre

Average number of villages served by a rural health facility, both in preventive and curative aspects in a given year. The rural health facility includes both main centre (RHC) and sub-centre (Sub-RHC)

16. (a) Traditional Medicine

Traditional medicine means medicine for the physical well being and longevity of people in accordance with any of the four nayas of traditional medicine namely Desana naya, Bethitsa naya, Netkhata veda naya and Vissadara naya.

(b) Traditional Medical Practitioner

Traditional Medical Practitioner means any person, qualified in traditional medicine and registered under the Traditional Medical Council Law.

17. Percentage of RHC which are Adequately Supplied with Staff, Equipment and Essential Drugs

Percentage of rural health centres which are adequately supplied with staff, equipment and essential drugs in a given year. The sanctioned staff in a rural health centre (RHC) at present includes one health assistant (HA), one lady health visitor (LHV), five midwives (MW; one in main centre and four in the sub-centres), one public health supervisor II (PHS II), and one watchman. Supplies and equipment in a RHC include RHC-kit, HA-kit, LHV-kit and sufficient number of MW-kits.

18. Percentage of Population Accessible to Safe and Convenient Drinking Water

Safe drinking water is defined to be the water obtained from the safe sources such as pipe, public tap, bottle water, tube well, protected dug well/spring/pond and covered rain water, and available within 500 yards. Therefore, this indicator can be calculated as the number of persons obtaining safe-drinking water in an area divided by the total population living in the same area for the given period of time.

19. Percentage of Population Accessible to Proper Sanitation

Those who are using the septic-tank latrine or fly proof pit latrine can be defined as those accessible to proper sanitation. Therefore, this indicator can be calculated as the number of persons using proper sanitary facilities in an area divided by the total population living in the same area for the given period of time.

20. Gross Enrollment Ratios by Level

Gross primary enrollment ratios represent the number of children enrolled in primary schools, whether or not they belong in the relevant school age groups, expressed as a percentage of the total number of primary school age children (5-9) in the population. Similarly for gross secondary enrollment ratios where lower secondary school pupils are those aged (10-13) and upper secondary school pupils are those aged (14-15).

21. Net Enrollment Ratios by Level

Net primary enrollment rates represent the number of primary school-aged children, that is those aged 5-9 who are enrolled in primary schools expressed as a percentage of the total number of primary school-aged children in the population. Similarly for lower secondary and upper secondary education age groups.

22. Transition Rates between Levels

It is the percentage (ratio) of successful candidates (graduates) of a certain level who continue to the initial grade of the next higher level and successful candidates of final grade of that certain level.

23. Retention Rates by Level

It is the percentage (ratio) of enrolment in last grade of a certain level and enrolment in first grade X years ago (where X is the duration of certain level minus one).

24. Internal Efficiency of Primary Education

Efficiency is defined as the optimal relationship between inputs and outputs of a system. In an education system, the input is measured by the student-years (one student studying at school for a year) and the graduates are the outputs. Therefore, the internal efficiency of primary education can be defined as the ratio of ideal number of student-years and the actual number of student-years spent on an average. For example, in an education system with a 5-year cycle of primary school, if a student spends only 5 years to be graduated on average, then, it is a totally efficient system. If a student spends 6 years to be graduated on average, the internal efficiency of the system is $5/6$ or 83.3 percent.

25. Enrolment in Basic and Monastic Education

Enrolment is the collective term for the number of children who are attending school.

Basic Education Enrolment includes enrolment from public schools, branch schools and affiliated schools, run by the government and community.

Monastic Education Enrolment includes only the enrolment from monastic schools run by the Buddhist Monasteries.

26. Number of Graduates by Specialization

Number of Arts, Science, Medicine, Engineering, Dental Medicine, Education, Economic, etc. graduates who have successfully completed from the Universities and Institutes during the reporting period.

27. Number of Persons Trained in Technical, Agricultural and Vocational Institutions by Skill Level

Number of graduates who have successfully completed from these respective technical, agricultural and vocational institutions (diploma level) and schools, by skill level of trades during the reporting period.

28. Adult Literacy Rate

Literate (people with basic reading, writing and numeracy skills) as percentage of population at corresponding age group of aged 15 years and above.

29. Mean Years of Schooling per Person Aged 5 and Over

Average number of years that a person spends in education. In general, the education level is directly proportional to number of schooling years, therefore, this indicator like literacy rate, can be used for analyzing the education level of the population.

30. Percentage of Female Student by Level

Number of female students by level, expressed as the percentage of total number of students by respective level during the reporting period.

31. Percentage of Senior Official Positions Held by Women in Public Sector

Number of women senior officials in public sector, expressed as a percentage of total number of senior officials in public sector during the reporting period. Senior official positions are defined to be those designations equivalent to deputy director or higher in the public sector.

32. Total Labour Force

The labour force framework classifies, at a given moment of time, the population aged 10 and over for measuring the economically active population into three categories: employed, unemployed and not in the labour force (or the currently inactive population). Persons below 10 years of age are added to the third category (not in the labour force).

The size of the labour force is basically dependent upon the size of the population and its age distribution, which in turn depends on the demographic factors of the population. The size of the labour force therefore depends not only on population growth but also on the prevailing socio-economic conditions of the population.

Labour force is used interchangeably with the *economically active population*. The economically active population is generally defined as that part of the population, which supplies and which is willing to supply labour for production of economic goods and services.

The economically inactive persons are those who are neither working nor looking for work such as those engaged in domestic duties in their own houses, students, the old or very young, the disabled and the persons voluntarily engaged in charitable and religious services.

33. Labour Force Participation Rate (LFPR)

Age, marital status and education are the primary determinants of individual labour force participation. These demographic and social characteristics are expected to play a major role even at the aggregate or macro level. Age structure affects the aggregate rate of labour force participation by different age groups. The age and gender specific labour force participation rates are calculated on the basis of two different concepts: (i) one which treats all the unpaid family workers as employed, and (ii) the other which does not.

The rate of labour force participation represents the number of people in the labour force aged 10 and above per 100 population of the same age group. The labour force framework classifies, at a given period of time, the entire population aged 10 and over into three categories; employed, unemployed and not in the labour force. The former two categories represent the economically active, while the latter represents the economically inactive.

34. Unemployment Rate

Unemployment rate is expressed as the ratio of unemployed persons (job seekers) and the labour force.

35. Labour Force by Education Level

The employed population by age and gender includes:

- (a) "Employer" - the person who either operates his own business or is engaged independently in a profession or trade for profit and employs, in connection with his business, one or more workers other than unpaid family workers or apprentices.
- (b) "Own account worker" - the person who operates his business alone or is engaged independently in trade or profession for fees or profit and who has no employees in his business other than unpaid family workers. A worker on own account is also referred to as self-employed person;
- (c) "Paid worker" - the person who works for public or private employer and receives remuneration for his work in money wages, piece rates or in kind. A paid worker is also referred to as an employee;
- (d) "Unpaid family worker"- the person who works without pay of any kind in a business operated by any member of the household excluding housekeeping.
- (e) "Unemployed" - persons who are able and willing to work but who are not at work during the period of inquiry and who are actively looking for work. Usually, education level of the labour force (both employed and unemployed) is defined by one of the following two types:

(a) **Complete List**

1. No Education
2. Standard 1-4
3. Standard 5-8
4. Standard 9-10
5. Monastic Education
6. Under Graduate
7. Diploma
8. Graduate
9. Post Graduate
10. Certificate
11. Others

(b) **Condensed List**

1. Illiterate
2. Literate, no formal Education
3. Primary
4. Secondary (middle & high)
5. Higher Education

36. Employed Population by Occupation and Industry Group

The type of economic activity that an employed person performs can be looked at from the point of view of:

- (a) the industry or the activity of the establishment in which an economically active person works during the time reference period;
- (b) the occupation or the kind of work done during the time reference period, and
- (c) the status as employee, owns account worker or unpaid family worker.

The major groups of occupational classification usually used in Myanmar are:

1. Legislation and Senior Officials and Managers
2. Professionals
3. Technical and Associate Professionals
4. Clerks
5. Services Workers & Shop and Market Sales Workers
6. Skilled Agricultural & Fishery Workers
7. Craft and Related Workers
8. Plant and Machine Operators and Assemblers
9. Elementary Occupations.

The employed population is primarily distributed by the following major industrial groupings.

1. Agriculture, Hunting, Forestry and Fishing
2. Mining and Quarrying
3. Manufacturing
4. Construction
5. Electricity, Gas, Water and Sanitary Services
6. Wholesale & Retail Trade, Restaurant and Hotel
7. Transport, Storage and Communication
8. Social Services
9. Activities not adequately defined.

They were further regrouped into three broad industrial sectors, viz., primary, secondary and tertiary. Each of these sectors was made up of the following industries –

Sector	Major Groupings
1. Primary	Agriculture, Hunting, Forestry & Fishing.
2. Secondary	Mining & Quarrying, Manufacturing, Construction.
3. Tertiary	Electricity, Gas, Water, Sanitary Services, Wholesale, Retail Trade, Restaurants and Hotels, Transport, Storage and Communication, Social Services, Activities not adequately defined.

37. Employed Population by Employment Status

The employed population can be classified by their status at work as follows:

1. Employer
2. Own account worker
3. Employee (Private / Cooperative / Government)
4. Unpaid family worker
5. Other.

38. Establishments and their Growth by Ownership

Factories, enterprises and industrial establishments with at least 5 workers are included in this category. The total number of establishments and their relative growth over the previous years by type of ownership (private, cooperative and government) can be used as a rough indicator for industrialization and development towards the market-oriented economic system.

39. Coverage of Social Security Scheme for Registered Employed Persons

Employers, employing 5 or more workers in establishments covered by Social Security Scheme and operating in the prescribed areas, have the obligation to insure their workers under the Social Security Insurance Scheme.

The Scheme shall take responsibility for the insured workers in place of the employers in such cases as sickness, sustaining injury from work accidents, maternity and death.

Contribution

Employers and Workers are liable to pay monthly contribution of 2.5 per cent and 1.5 per cent respectively based on monthly wage bill. Benefits provided for insured workers are:

- | | |
|--------------------|--|
| Free Medical Care: | In case of sickness; maternity and work injury and |
| Cash Benefits: | Sickness Benefit; Maternity Benefit; Funeral Grant,
Temporary Disability Benefit; Permanent Disability
Pension and Survivors' Pension. |

40. Real GDP and Growth Rate of GDP

Gross Domestic Product (GDP) is the total value of all final goods and services produced in an economy during a year. Real GDP is the value of all final goods and services at constant producers' prices.

Growth rate of GDP is the growth of the real GDP of an economy over time.

41. Real GDP per Head and Growth Rate

Real GDP per head is real GDP per person. It is computed by dividing total real GDP by total population for a given year.

42. Food Availability per Head

The amount of food (rice, edible oil, meat, fish, beans and pulses, etc.) available in the country per person.

43. Investment, Exports and Imports

Investment is the expenditure for fixed asset, which makes addition to capital stock.

Exports (value) are the value of goods and services sent to another country.

Imports (value) are the value of goods and services brought into the country.

44. Public Expenditure by Sector

Total expenditure incurred by the government for the development of the country which includes both current and capital expenditure and usually expressed by sectors.

45. Consumers' Price Index

The *Consumer Price Index* measures the average change in the retail prices of goods and services purchased and consumed. It is computed based on "1986 Household Expenditure Survey" conducted in Yangon by the Central Statistical Organization. All goods and services purchased and consumed are grouped into six major categories and goods and services for computing the CPI are selected on the basis of their importance and representativeness for the respective groups.

46. Cultivated Land per Head

Cultivated land or sown area is the area, which is actually planted during the agricultural year. On the other hand, cultivated land can also be expressed as the sum of area under temporary crops and area under permanent crops.

Area under temporary crops includes all land used for crops with a growing cycle of under one year, which needs to be newly sown or planted for further production after harvest.

Land under permanent crops is the land cultivated with crops which occupy it for a long period of time and which do not have to be planted for several years after each harvest.

The cultivated land per head is the amount of land available for each and every person in the country.

47. Land Use (Gross Area Sown)

Gross area sown is the total area cultivated during the year, including areas under multiple cropping.

Irrigated areas related to areas purposely provided with water, including land flooded by river water for crop cultivation or pasture improvement, whether this area is irrigated several times or only once during the year stated. Forest and woodland refer to land under natural or planted trees, whether productive or not, and includes land from which forest have been cleared but which will be reforested in the foreseeable future. The information on land-use can be obtained from the Settlement and Land Records Department under the Ministry of Agriculture and Irrigation.

48. Number of Motor Vehicles per 1000 Population

Total Number of Motor Vehicles means, officially registered motor vehicles of various types, passengers cars, commercial vehicles and motor cycles but excluding trailers and farm tractors.

Private use vehicle means passengers and goods vehicle for private use only, not for commercial use.

49. Energy Consumption by Type

Major portion of energy is obtained from the firewood, charcoal, electric power and petroleum. The production of firewood and charcoal is expressed in terms of thousand metric ton and crude oil production is measured by million barrels. The electric energy is expressed as the thousands of units (Mega-watt-hour) consumed.

Units consumed indicate the amount of electric power consumed by the power stations for department use plus power used by the consumers. Sale of electric power is classified into four categories such as:

- (i) general purpose (general purpose - domestic use);
- (ii) industrial power;
- (iii) bulk (commercial power); and
- (iv) others (temporary lighting, small power and street lighting).

50. **Railway Traffic Passenger Miles**

One passenger-mile is a mile a passenger is carried. Passenger-kilometers can then be computed by multiplying passenger-miles by 1.6.

51. **Railway Traffic Cargo-Ton Miles**

One cargo (freight ton-mile) is a ton of goods carried a mile. Freight cargo-ton-kilometers can be computed by multiplying cargo-miles by 1.6.

52. **Number of Telephones and Telephones per 1,000 Inhabitants**

Number of telephone lines subscribed.

53. **Daily Newspaper: Number of Circulation**

Total number of daily newspapers circulated in a day.

54. **Number of Radios and TV Sets, and Radios and TV Sets per 1,000 Inhabitants**

Number of radios and television receivers licensed. The figures on receivers relate to all types of receivers for radio broadcasts and television broadcasts to the general public.

55. **Number of IPRD Libraries**

(a) **Library**

The Information and Public Relations Libraries are opened in every district and township across the country, which provide free of charge library services to the general public.

(b) **Registered Library**

Management Committee for Library and Exhibition, which is chaired by Director General of IPRD, is formed in accord with the 1964 Library and Exhibition Management Law. Registered library is a library enlisted according to this Law.

(c) **Reader**

Readers are the sum of visitors, those who read, listen and watch in IPRD libraries. Daily Readers' Records are kept in all IPRD offices.

56. **Social Welfare Establishments**

Numbers of Residential Nursery, Pre-primary School and Day Care Centres shown in the table are run by the Department of Social Welfare. There are Pre-primary Schools and Day Care Centres established by NGOs as well and the Department of Social Welfare provides them with financial and technical assistance every year.

Homes for the Aged are established by religious and voluntary social organizations. Registered Homes for the Aged are given financial assistance by the Department of Social Welfare.

57. Myanmar Maternal and Child Welfare Association

The Myanmar Maternal and Child Welfare Association is co-operating with the Ministry of Education in realizing its Goal towards "Education for all". Child Day Care Centres for Children 3-5 years old were established by MMCWA since 1997 and it is progressing upto now.

At these Day Care Centres the 3-5 years old children are provided with programmes to promote physical as well as mental and emotional development.

An Early Childhood Development Centre has been established at the Central MMCWA building complex and over several hundreds Child Day Care Centres have been established through out the states and divisions.

58. Number (Percentage) of Villages with School, Clinic and Electric Lighting

Proportion of villages with basic education facilities, health care facilities and electric lighting (as communication facility). Here, school includes all types of government schools, affiliated schools and monastic primary schools but exclude private schools. Similarly, clinic includes both rural health care centres and sub-rural health centres.

59. Crime Rate

Crime Rate means total number of crimes convicted divided by population and multiplied by 100,000. It indicates crime per hundred thousand of population.

$$\text{Crime Rate} = \frac{\text{Total No. of Crime}}{\text{Population}} \times 100,000$$

Note : age, type of crimes. region wise are not included here.

Note: Acronyms for data sources are presented in *Italics* below:

- (1) *CSO* = *Central Statistical Organization*
- (2) *DAP* = *Department of Agricultural Planning*
- (3) *DAST* = *Department of Advanced Science and Technology*
- (4) *DCI* = *Department of Cottage Industries*
- (5) *DEPT* = *Department of Educational Planning and Training*
- (6) *DHP* = *Department of Health Planning*
- (7) *DLF* = *Directorate of Livestock and Fisheries*
- (8) *DMIP* = *Directorate of Myanma Industrial Planning*
- (9) *DMS* = *Department of Medical Science*
- (10) *DOC* = *Department of Cooperative*
- (11) *DOH* = *Department of Health*
- (12) *DOL* = *Department of Labour*
- (13) *DOP* = *Department of Population*
- (14) *DPPS* = *Department for the Promotion and Propagation of the Sasana*
- (15) *DSW* = *Department of Social Welfare*
- (16) *DTM* = *Department of Traditional Medicine*
- (17) *DTYE* = *Department of Technical and Vocational Education*
- (18) *ENVIPRO* = *Environmental Professional (Myanmar) Co; Ltd*
- (19) *FD* = *Forest Department*
- (20) *GAD* = *General Administration Department*
- (21) *IPRD* = *Information & Public Relation Department*
- (22) *MEPE* = *Myanmar Electric Power Enterprise*
- (23) *MERB* = *Myanmar Education Research Bureau*
- (24) *MMCWA* = *Myanmar Maternal and Child Welfare Association*
- (25) *MMPE* = *Myanmar Motion Picture Enterprise*
- (26) *MPF* = *Myanmar Police Force*
- (27) *MPT* = *Myanma Posts and Telecommunications*
- (28) *MR* = *Myanma Railways*
- (29) *NPE* = *News Periodicals Enterprise*
- (30) *PD* = *Planning Department*
- (31) *RTA* = *Department of Road Transport Administration*
- (32) *SLRD* = *Settlement and Land Records Department*
- (33) *SSB* = *Social Security Board*

