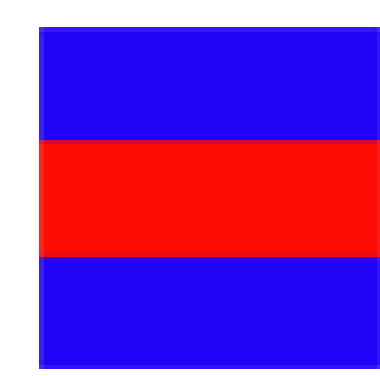




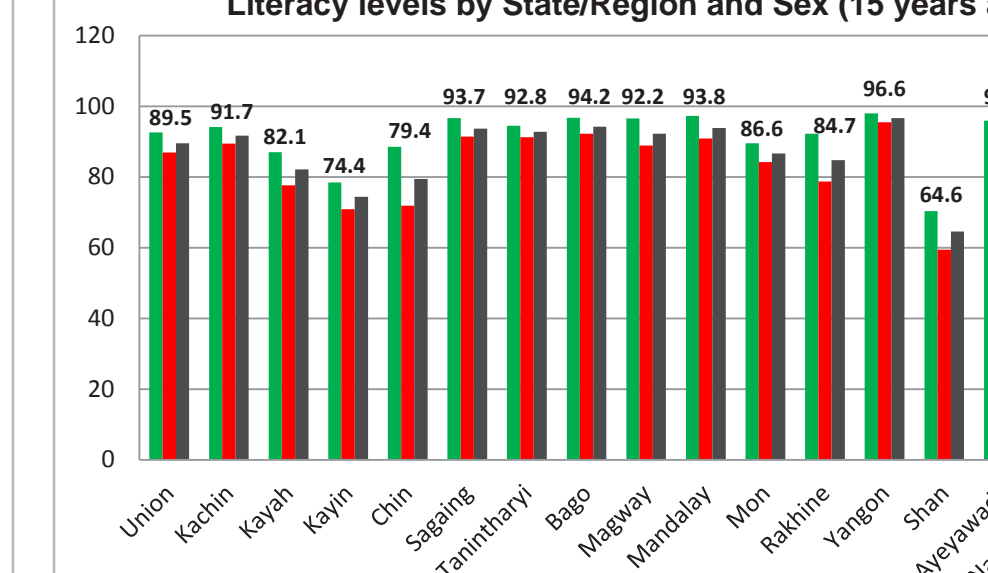
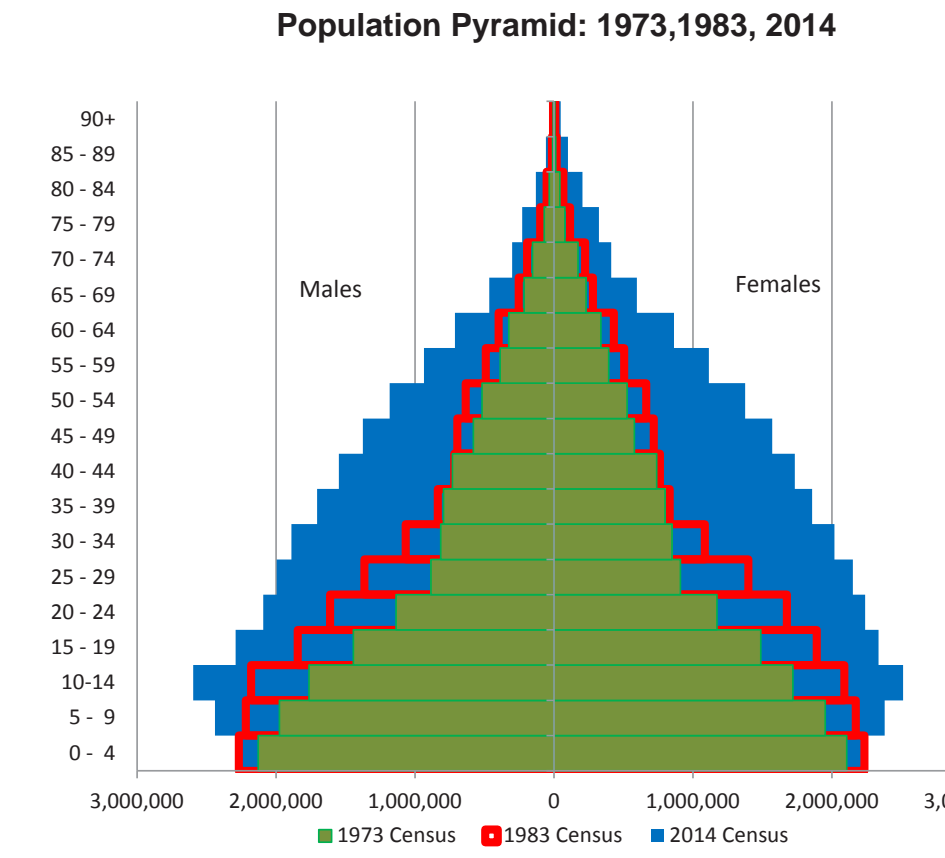
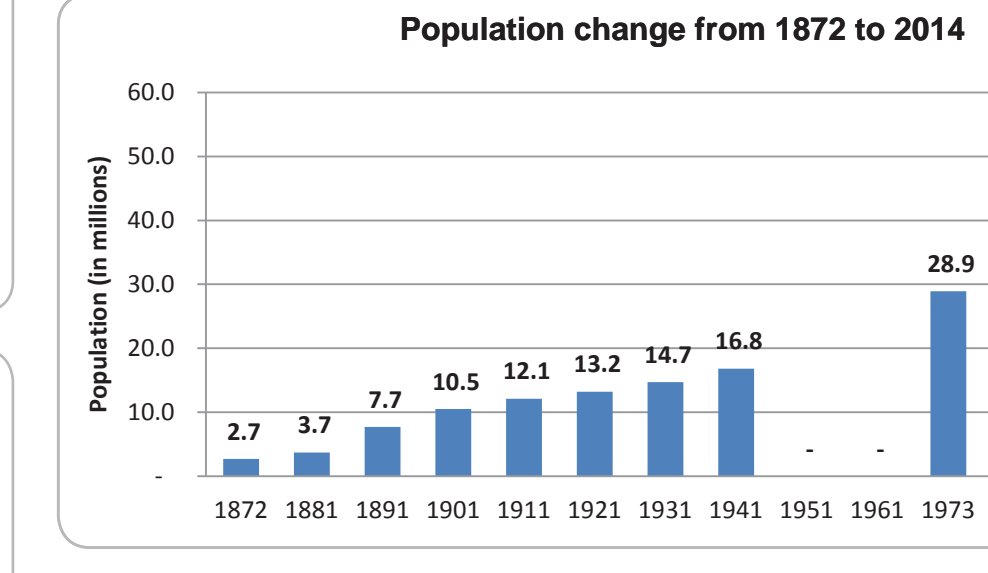
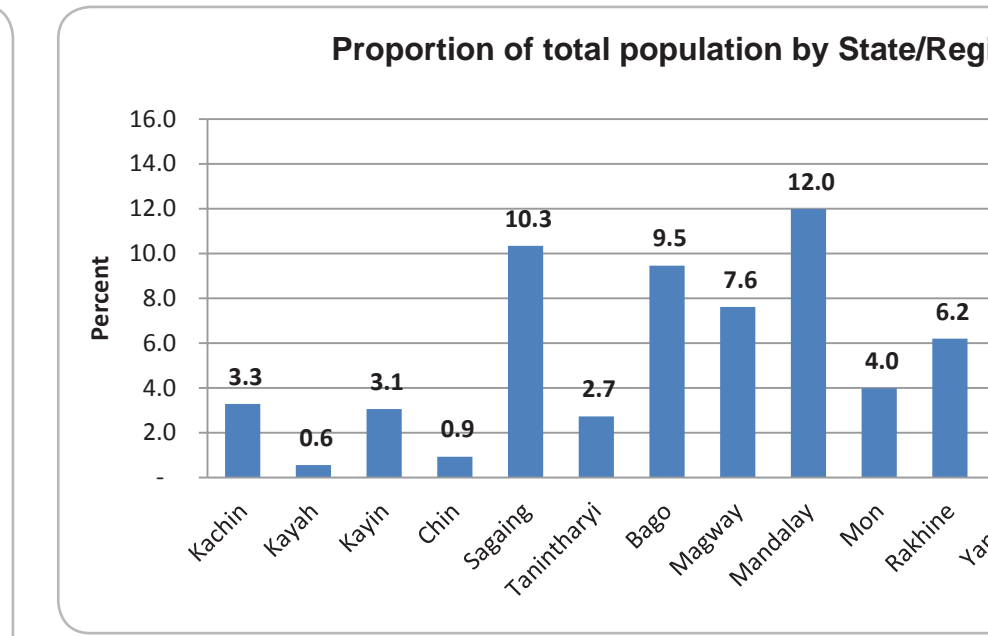
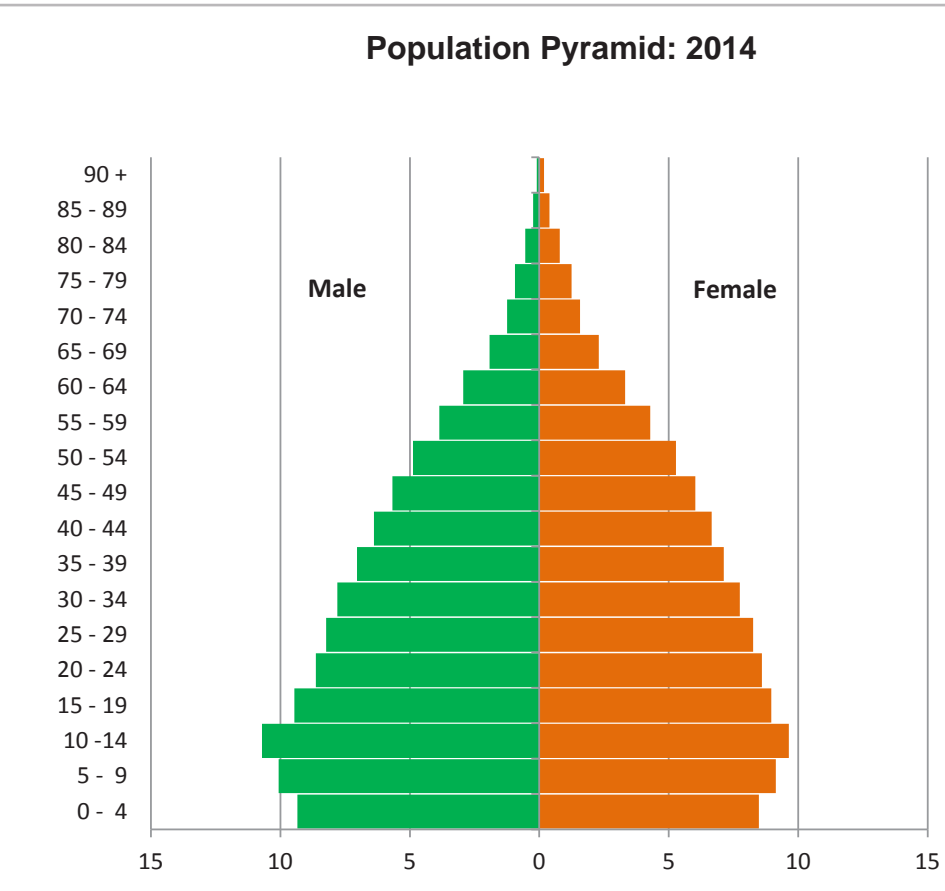
2014 Population and Housing Census of Myanmar - Data Sheet



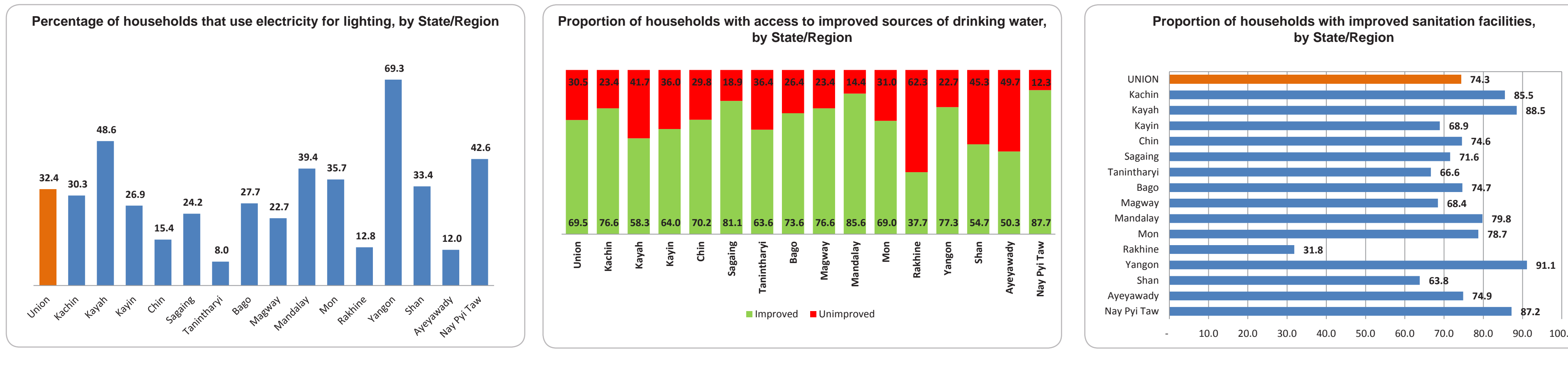
Administrative Unit (Union, State/Region and District)	Population			Sex Ratio (1000 Males/Females)	Median Age	Population			Total Dependency Ratio (15-64 years)	Child Dependency Ratio	Old Dependency Ratio	Ageing Index	Number of conventional households	Mean Households size	Percentage Ever Married (15 years and over)		Labour Force Participation Rate (15-64)		Unemployment Rate (15-64)	Percent of population who are literate (15 years and over)			Percent of population by school attendance (5-17 years)			Percent of population who have disability in ...				Percent of HH with main energy for cooking	Percent of HH with improved drinking water source	Percent of HH with improved sanitation facilities	Percent of HH with radio or television	Percent of HH with mobile phone	Percent of HH with motorcycle											
	Both Sexes		Male			Female	0-14 years	15-64 years							65 years & over	Male	Female	Male		Female	Male	Female	Male	Female	Male	Female	Male	Female	Attending							Not Attending	Not Attending	Seeing	Hearing	Remembering/Mental	Clean Energy	Wood/Charcoal	Any type	Seeing	Hearing	Remembering/Mental
	(1)	(2)	(3)			(4)	(5)	(6)							(7)	(8)	(9)	(10)		(11)	(12)	(13)	(14)	(15)	(16)	(17)	(18)	(19)	(20)							(21)	(22)	(23)	(24)	(25)	(26)	(27)	(28)	(29)	(30)	(31)
UNION*	51,486,253	24,824,586	26,661,667	93.0	27.1	14,399,569	32,982,768	2,897,563	33,126,117	52.5	43.7	8.8	20.1	10,877,832	4.4	45.6	54.4	67.0	85.2	50.5	4.0	3.9	4.1	(24)	92.6	86.9	64.3	24.8	10.9	4.6	2.5	1.3	1.9	1.7	16.8	0.2	81.0	69.5	74.3	66.3	64.2	57.5				
KACHIN	1,689,441	878,304	811,057	106.2	24.7	492,879	1,084,096	65,866	1,052,358	51.6	45.5	6.1	13.4	269,365	5.1	47.2	52.8	67.2	45.8	3.7	3.5	4.3	91.7	94.1	89.4	75.7	27.0	7.3	4.0	2.2	1.3	1.4	5.3	0.0	97.7	76.6	74.1	59.2	51.3	67.7						

Demographic Indicators (UNION)

- Annual Growth Rate (2003 - 2014): 0.89% per annum
- Life Expectancy at Birth:
 - Both Sexes: 66.8 years
 - Males: 63.9 years
 - Females: 69.9 years
- Under Five Mortality Rate: 72 deaths per 1,000 live births
- Infant Mortality Rate: 62 deaths per 1,000 live births
- Total Fertility Rate: 2.29



* Population numbers include (1,206,353) missed at Union level, (46,600) missed in Kachin, (69,753) missed in Kayah and (1,090,000) missed in Rakhine. All data is based on enumerated population.



Explanatory Notes

The data published in this Data Sheet are from the 2014 Myanmar Population and Housing Census. Definitions of terms used are given below:-

- Population:** Number of people enumerated in Myanmar on the night of 29th March 2014
- Sex Ratio:** Number of males per 100 females in the population (number of males divided by females multiplied by 100).
- Median Age:** The age that divides a population into two numerically equal groups; that is, half the people are younger than this age and half are older.
- Conventional Household:** A household consisting of one or more persons who usually share their living quarters and principal meals.
- Mean Household Size:** The average number of persons per household (people living in households divided by number of conventional households).
- Total Dependency Ratio:** The total dependency ratio is the proportion of dependents (people younger than age 15 and older than age 64) to the population of working age (age 15-64). Three different measures are calculated:- total dependency ratio, child dependency ratio and old dependency ratio.
- Child Dependency Ratio:** is the proportion of people younger than 15 years to the working age population (15-64).
- Old Dependency Ratio:** is the proportion of people older than 64 years to the working age population (15-64).
- Ageing Index:** The number of persons aged 65 years and over per 100 people under the age of 15 years.
- Literacy:** A person is considered literate if he or she can read and write in any language for daily use.
- Labour Force Participation Rate:** Is the proportion of the population aged 15-64 who are either employed or unemployed to the total population aged 15-64. The remaining people (who are not employed and are not looking for employment) in the total population are considered economically inactive.
- Clean Cooking Energy:** Use of electricity and Liquefied Petroleum Gas (LPG) as main type of fuel for cooking.
- Wood/Charcoal:** Use of fire wood and charcoal as main type of fuel for cooking.
- Improved Drinking Water:** Water sources from water purifier/bottled, tap/water-piped, tube well/bore hole and protected wellspring.
- Improved Sanitation Facility:** Toilet facilities are flush and water seal (improved pit latrine).